



INTERNATIONAL GEMOLOGICAL INSTITUTE

ELECTRONIC COPY

LABORATORY GROWN DIAMOND REPORT

November 13, 2025

IGI Report Number

LG747599452

Description

LABORATORY GROWN DIAMOND

Shape and Cutting Style

HEART MODIFIED BRILLIANT

Measurements

4.71 X 5.46 X 2.70 MM

GRADING RESULTS

Carat Weight

0.50 CARAT

Color Grade

FANCY INTENSE YELLOW

Clarity Grade

VVS 2

ADDITIONAL GRADING INFORMATION

Polish

EXCELLENT

Symmetry

EXCELLENT

Fluorescence

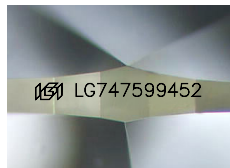
NONE

Inscription(s)

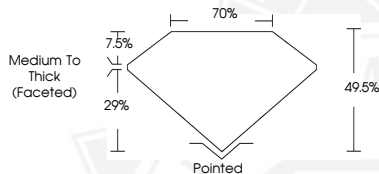
IGI LG747599452

Comments: This Laboratory Grown Diamond was created by Chemical Vapor Deposition (CVD) growth process.

Indications of post-growth treatment.



Sample Image Used



November 13, 2025

IGI Report Number LG747599452

HEART MODIFIED BRILLIANT

LABORATORY GROWN DIAMOND

4.71 X 5.46 X 2.70 MM

Carat Weight 0.50 CARAT

Color Grade FANCY INTENSE

YELLOW

Clarity Grade VVS 2

Polish EXCELLENT

Symmetry EXCELLENT

Fluorescence NONE

Inscription(s) IGI LG747599452

Comments: This Laboratory Grown Diamond was created by Chemical Vapor Deposition (CVD) growth process. Indications of post-growth treatment.



November 13, 2025

IGI Report Number LG747599452

HEART MODIFIED BRILLIANT

LABORATORY GROWN DIAMOND

4.71 X 5.46 X 2.70 MM

Carat Weight 0.50 CARAT

Color Grade FANCY INTENSE

YELLOW

Clarity Grade VVS 2

Polish EXCELLENT

Symmetry EXCELLENT

Fluorescence NONE

Inscription(s) IGI LG747599452

Comments: This Laboratory Grown Diamond was created by Chemical Vapor Deposition (CVD) growth process. Indications of post-growth treatment.



THIS DOCUMENT WAS PRODUCED WITH THE FOLLOWING SECURITY MEASURES: SPECIAL DOCUMENT PAPER, INK SCREENS, WATERMARK, BACKGROUND DESIGNS, HOLOGRAM AND OTHER SECURITY FEATURES NOT LISTED AND DO EXCEED DOCUMENT SECURITY INDUSTRY GUIDELINES.

For terms & conditions and to verify this report, please visit www.igi.org