



**INTERNATIONAL
GEMOLOGICAL
INSTITUTE**

ELECTRONIC COPY



November 10, 2025

IGI Report Number **LG747599334**

**ROUND BRILLIANT
LABORATORY GROWN DIAMOND
4.29 - 4.32 X 2.68 MM**

| | |
|----------------|------------------------|
| Carat Weight | 0.31 CARAT |
| Color Grade | D |
| Clarity Grade | I.F. |
| Cut Grade | EXCELLENT |
| Polish | EXCELLENT |
| Symmetry | EXCELLENT |
| Fluorescence | NONE |
| Inscription(s) | IGI LG747599334 |

Comments: This Laboratory Grown Diamond was created by Chemical Vapor Deposition (CVD) growth process. Type IIa

LABORATORY GROWN DIAMOND REPORT

November 10, 2025

IGI Report Number **LG747599334**

Description **LABORATORY GROWN DIAMOND**

Shape and Cutting Style **ROUND BRILLIANT**

Measurements **4.29 - 4.32 X 2.68 MM**

GRADING RESULTS

Carat Weight **0.31 CARAT**

Color Grade **D**

Clarity Grade **INTERNALLY FLAWLESS**

Cut Grade **EXCELLENT**

ADDITIONAL GRADING INFORMATION

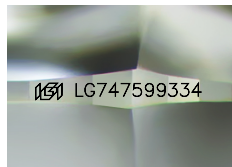
Polish **EXCELLENT**

Symmetry **EXCELLENT**

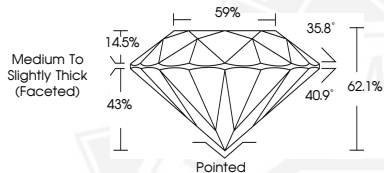
Fluorescence **NONE**

Inscription(s) **IGI LG747599334**

Comments: This Laboratory Grown Diamond was created by Chemical Vapor Deposition (CVD) growth process. Type IIa



Sample Image Used



November 10, 2025

IGI Report Number **LG747599334**

**ROUND BRILLIANT
LABORATORY GROWN DIAMOND
4.29 - 4.32 X 2.68 MM**

| | |
|----------------|------------------------|
| Carat Weight | 0.31 CARAT |
| Color Grade | D |
| Clarity Grade | I.F. |
| Cut Grade | EXCELLENT |
| Polish | EXCELLENT |
| Symmetry | EXCELLENT |
| Fluorescence | NONE |
| Inscription(s) | IGI LG747599334 |

Comments: This Laboratory Grown Diamond was created by Chemical Vapor Deposition (CVD) growth process. Type IIa



THIS DOCUMENT WAS PRODUCED WITH THE FOLLOWING SECURITY MEASURES: SPECIAL DOCUMENT PAPER, INK SCREENS, WATERMARK BACKGROUND DESIGNS, HOLOGRAM AND OTHER SECURITY FEATURES NOT LISTED AND DO EXCEED DOCUMENT SECURITY INDUSTRY GUIDELINES.

For terms & conditions and to verify this report, please visit www.igi.org