

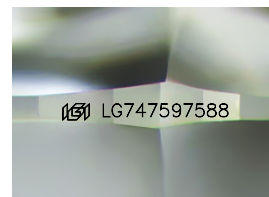
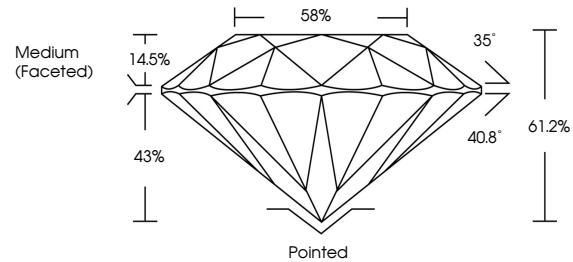


**INTERNATIONAL  
GEMOLOGICAL  
INSTITUTE**

**ELECTRONIC COPY**

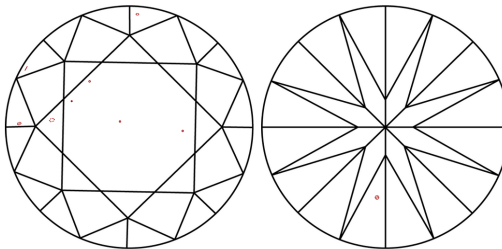
LG747597588  
Report verification at [igi.org](https://www.igi.org)

## PROPORTIONS



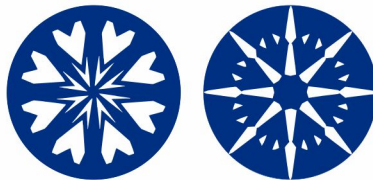
Sample Image Used

## CLARITY CHARACTERISTICS



## KEY TO SYMBOLS

Red symbols indicate internal characteristics.  
Green symbols indicate external characteristics.



**www.igi.org**

## LABORATORY GROWN DIAMOND REPORT



November 15, 2025

IGI Report Number **LG747597588**

Description	LABORATORY GROWN DIAMOND
-------------	--------------------------

Shape and Cutting Style **ROUND BRILLIANT**

Measurements	9.83 - 9.86 X 6.02 MM
--------------	-----------------------

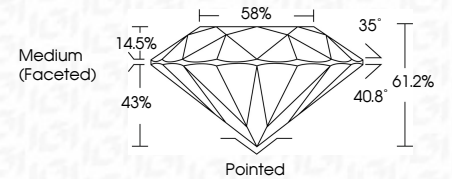
## GRADING RESULTS

Carat Weight **3.58 CARATS**

Color Grade **D**

Clarity Grade VS 2

Cut Grade **IDEAL**



### ADDITIONAL GRADING INFORMATION

Polish **EXCELLENT**Symmetry **EXCELLENT**Fluorescence **NONE**Inscription(s)  LG747597588

Comments: HEARTS & ARROWS  
This Laboratory Grown Diamond was created by  
Chemical Vapor Deposition (CVD) growth process.  
Type IIa



IGI

November 15, 2025	
IGI Report No. U574797588	
ROUND BRILLIANT	
9.88 - 9.86 X 6.02 MM	
Carat Weight	3.68 CARATS
Color Grade	D
Clarity Grade	Vs2
Cut Grade	IDEAL
Depth	61.2%
Table	56%
Girdle	Medium (Faceted)
Culet	Pointed
Polish	EXCELLENT
Symmetry	EXCELLENT
Fluorescence	NONE
Inscriptions(s)	igi U574797588
Comments:	
	HEARS & ARROWS
	The Laboratory Growth Diamond was
	created by Chemical Vapor Deposition
	(CVD) growth process.
	Type IIA

© IGI 2020, International Gemological Institute

FD - 10 20



THIS DOCUMENT WAS PRODUCED WITH THE FOLLOWING SECURITY MEASURES: SPECIAL DOCUMENT PAPER, INK SCREENS, WATERMARK, BACKGROUND DESIGNS, HOLOGRAM AND OTHER SECURITY FEATURES NOT LISTED AND DO EXCEED DOCUMENT SECURITY INDUSTRY GUIDELINES.