



**ELECTRONIC COPY**

## LABORATORY GROWN DIAMOND REPORT

November 10, 2025	
IGI Report Number	LG747591397
Description	LABORATORY GROWN DIAMOND
Shape and Cutting Style	ROUND BRILLIANT
Measurements	9.75 - 9.78 X 6.05 MM

## GRADING RESULTS

Carat Weight	3.54 CARATS
Color Grade	D
Clarity Grade	VVS 2
Cut Grade	IDEAL

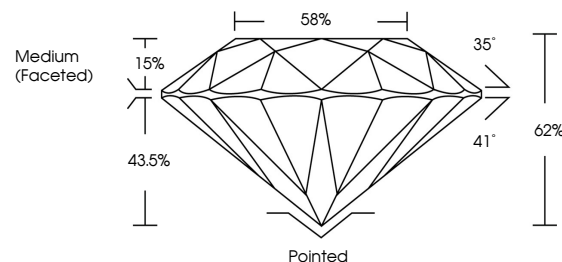
### ADDITIONAL GRADING INFORMATION

Polish	EXCELLENT
Symmetry	EXCELLENT
Fluorescence	NONE
Inscription(s)	 LG747591397

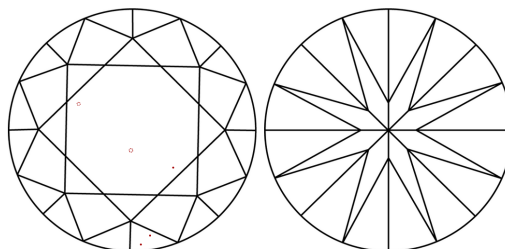
Comments: HEARTS & ARROWS  
This Laboratory Grown Diamond was created by  
Chemical Vapor Deposition (CVD) growth process.  
Type IIa

LG747591397  
Report verification at [igi.org](https://igi.org)

## PROPORTIONS



## CLARITY CHARACTERISTICS

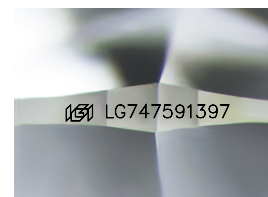


### KEY TO SYMBOLS

Red symbols indicate internal characteristics.  
Green symbols indicate external characteristics.



**www.igi.org**



Sample Image Used

## COLOR

D E F G H I J Faint Very Light Light

## CLARITY

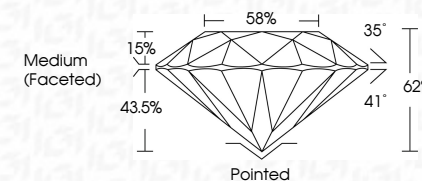
FL	IF	VVS <sup>1-2</sup>	VS <sup>1-2</sup>	SI <sup>1-2</sup>	I <sup>1-3</sup>
Flawless	Internally Flawless	Very Very Slightly Included	Very Slightly Included	Slightly Included	Included




November 10, 2025	
IGI Report Number	LG747591397
Description	LABORATORY GROWN DIAMOND
Shape and Cutting Style	ROUND BRILLIANT
Measurements	9.75 - 9.78 X 6.05 MM

## GRADING RESULTS

Carat Weight	3.54 CARATS
Color Grade	D
Clarity Grade	VVS 2
Cut Grade	IDEAL



### ADDITIONAL GRADING INFORMATION

Polish	EXCELLENT
Symmetry	EXCELLENT
Fluorescence	NONE
Inscription(s)	
<p>Comments: HEARTS &amp; ARROWS</p> <p>This Laboratory Grown Diamond was created by Chemical Vapor Deposition (CVD) growth process.</p> <p>Type IIa</p>	



© IGI 2020, International Gemological Institute

FD - 10 20



THIS DOCUMENT WAS PRODUCED WITH THE FOLLOWING SECURITY MEASURES: SPECIAL DOCUMENT PAPER, INK SCREENS, WATERMARK, BACKGROUND DESIGNS, HOLOGRAM AND OTHER SECURITY FEATURES NOT LISTED AND DO EXCEED DOCUMENT SECURITY INDUSTRY GUIDELINES

November 10, 2025  
IGI Report No LG747591397  
ROUND BRILLIANT

9.75 - 9.78 X 6.05 MM	
Carat Weight	3.54 CARATS
Color Grade	D
Clarity Grade	VVS 2
Cut Grade	IDEAL
Depth	62%
Table	58%
Girdle	Medium (Excellent)

Culet	Pointed
Polish	EXCELLENT
Symmetry	EXCELLENT
Fluorescence	NONE

**Comments:**  
HEARTS & ARROWS  
This Laboratory Grown Diamond was  
created by Chemical Vapor Deposition  
(CVD) growth process.