



ELECTRONIC COPY

LG747587927
Report verification at igi.org



November 8, 2025

IGI Report Number **LG747587927**

Description **LABORATORY GROWN DIAMOND**

Shape and Cutting Style **CUT CORNERED
RECTANGULAR MODIFIED
BRILLIANT**

Measurements **10.08 X 7.06 X 4.89 MM**

GRADING RESULTS

Carat Weight **3.07 CARATS**

Color Grade **D**

Clarity Grade **VS 1**

November 8, 2025

IGI Report Number **LG747587927**

Description **LABORATORY GROWN DIAMOND**

Shape and Cutting Style **CUT CORNERED RECTANGULAR
MODIFIED BRILLIANT**

Measurements **10.08 X 7.06 X 4.89 MM**

GRADING RESULTS

Carat Weight **3.07 CARATS**

Color Grade **D**

Clarity Grade **VS 1**

ADDITIONAL GRADING INFORMATION

Polish **EXCELLENT**

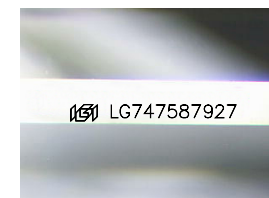
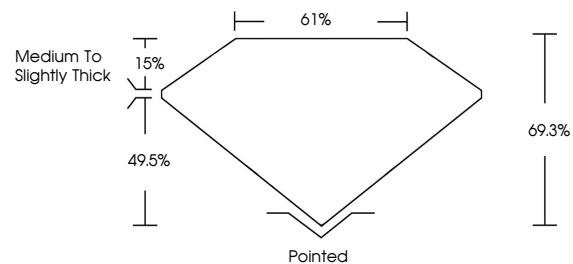
Symmetry **EXCELLENT**

Fluorescence **NONE**

Inscription(s) **IGI LG747587927**

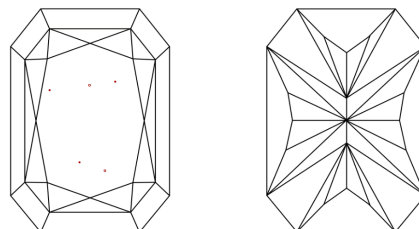
Comments: This Laboratory Grown Diamond was created by Chemical Vapor Deposition (CVD) growth process. Type IIa

PROPORTIONS



Sample Image Used

CLARITY CHARACTERISTICS



KEY TO SYMBOLS

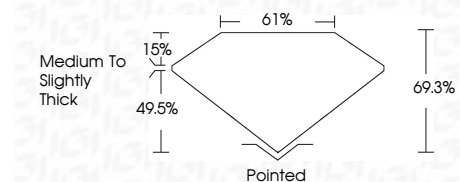
Red symbols indicate internal characteristics.
Green symbols indicate external characteristics.

COLOR

D E F G H I J Faint Very Light Light

CLARITY

FL	IF	VS ¹⁻²	VS ¹⁻²	SI ¹⁻²	I ¹⁻³
Flawless	Internally Flawless	Very Very Slightly Included	Very Slightly Included	Slightly Included	Included



ADDITIONAL GRADING INFORMATION

Polish **EXCELLENT**

Symmetry **EXCELLENT**

Fluorescence **NONE**

Inscription(s) **IGI LG747587927**

Comments: This Laboratory Grown Diamond was created by Chemical Vapor Deposition (CVD) growth process. Type IIa



IGI



November 8, 2025
IGI Report No LG747587927
CUT CORNERED RECT. MODIFIED BRILLIANT

10.08 X 7.06 X 4.89 MM

3.07 CARATS
D

Color Grade
D

Clarity Grade
VS 1

Depth
69.3%

Table
61%

Girdle
Medium to Slightly Thick

Culet
Pointed

Polish
EXCELLENT

Symmetry
EXCELLENT

Fluorescence
NONE

Inscription(s)
IGI LG747587927

Comments: This Laboratory Grown Diamond was created by Chemical Vapor Deposition (CVD) growth process. Type IIa