



**ELECTRONIC COPY**

LG747580291  
Report verification at igi.org



November 14, 2025

IGI Report Number **LG747580291**

Description **LABORATORY GROWN DIAMOND**

Shape and Cutting Style **MODIFIED PRINCESS CUT**

Measurements **8.34 X 8.34 X 6.08 MM**

**GRADING RESULTS**

Carat Weight **3.58 CARATS**

Color Grade **G**

Clarity Grade **VVS 2**

November 14, 2025

IGI Report Number **LG747580291**

Description **LABORATORY GROWN DIAMOND**

Shape and Cutting Style **MODIFIED PRINCESS CUT**

Measurements **8.34 X 8.34 X 6.08 MM**

**GRADING RESULTS**

Carat Weight **3.58 CARATS**

Color Grade **G**

Clarity Grade **VVS 2**

**ADDITIONAL GRADING INFORMATION**

Polish **EXCELLENT**

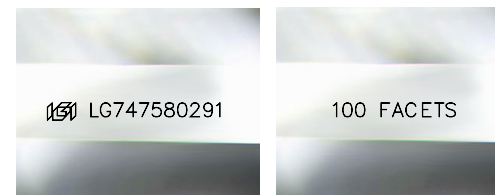
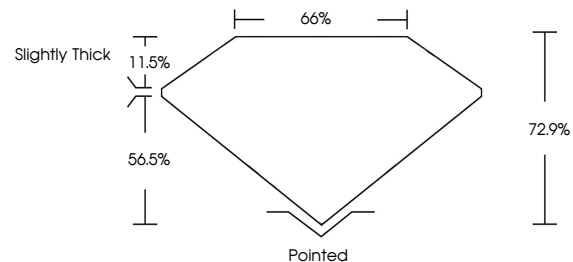
Symmetry **EXCELLENT**

Fluorescence **NONE**

Inscription(s) **IGI LG747580291  
100 FACETS**

Comments: This Laboratory Grown Diamond was created by Chemical Vapor Deposition (CVD) growth process.  
Type IIa

**PROPORTIONS**



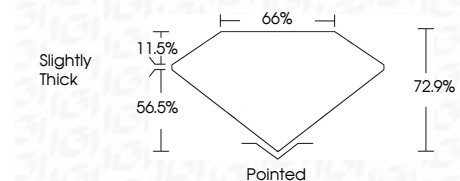
Sample Images Used

**COLOR**

D E F G H I J Faint Very Light Light

**CLARITY**

FL	IF	VS <sup>1-2</sup>	VS <sup>1-2</sup>	SI <sup>1-2</sup>	I <sup>1-3</sup>
Flawless	Internally Flawless	Very Very Slightly Included	Very Slightly Included	Slightly Included	Included



**ADDITIONAL GRADING INFORMATION**

Polish **EXCELLENT**

Symmetry **EXCELLENT**

Fluorescence **NONE**

Inscription(s) **IGI LG747580291  
100 FACETS**

Comments: This Laboratory Grown Diamond was created by Chemical Vapor Deposition (CVD) growth process.  
Type IIa



**IGI**



November 14, 2025  
IGI Report No LG747580291  
**MODIFIED PRINCESS CUT**  
8.34 X 8.34 X 6.08 MM  
3.58 CARATS  
G  
3.58 CARATS  
G  
VVS 2  
72.9%  
65%  
Slightly Thick  
Pointed  
EXCELLENT  
EXCELLENT  
NONE  
IGI LG747580291 100 FACETS  
Comments: This Laboratory Grown Diamond was created by Chemical Vapor Deposition (CVD) growth process.  
Type IIa