



ELECTRONIC COPY

LG747578369
Report verification at igi.org



November 12, 2025
IGI Report Number **LG747578369**
Description **LABORATORY GROWN DIAMOND**
Shape and Cutting Style **SQUARE CUSHION MODIFIED BRILLIANT**
Measurements **5.93 X 5.65 X 3.80 MM**
GRADING RESULTS
Carat Weight **1.04 CARAT**
Color Grade **FANCY VIVID BLUE**
Clarity Grade **VS 1**

LABORATORY GROWN DIAMOND REPORT

November 12, 2025
IGI Report Number **LG747578369**
Description **LABORATORY GROWN DIAMOND**
Shape and Cutting Style **SQUARE CUSHION MODIFIED BRILLIANT**
Measurements **5.93 X 5.65 X 3.80 MM**

GRADING RESULTS

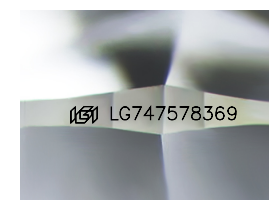
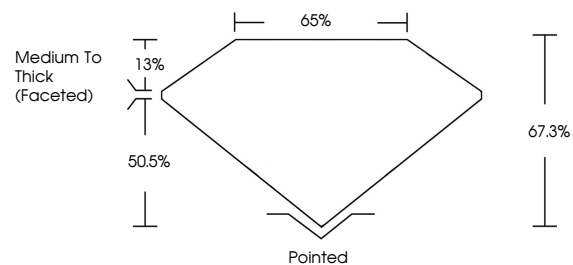
Carat Weight **1.04 CARAT**
Color Grade **FANCY VIVID BLUE**
Clarity Grade **VS 1**

ADDITIONAL GRADING INFORMATION

Polish **EXCELLENT**
Symmetry **EXCELLENT**
Fluorescence **NONE**
Inscription(s) **IGI LG747578369**

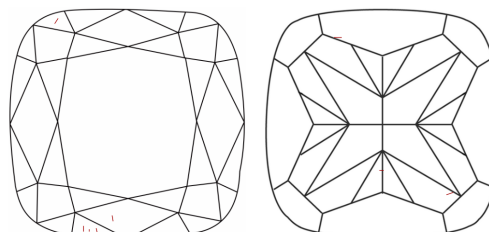
Comments: This Laboratory Grown Diamond was created by High Pressure High Temperature (HPHT) growth process. Indications of post-growth treatment.

PROPORTIONS



Sample Image Used

CLARITY CHARACTERISTICS



KEY TO SYMBOLS

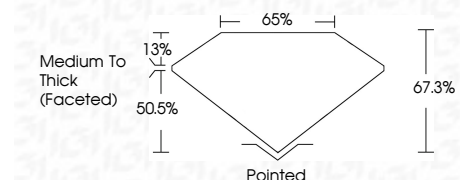
Red symbols indicate internal characteristics.
Green symbols indicate external characteristics.

COLOR

D E F G H I J Faint Very Light Light

CLARITY

FL	IF	VS ¹⁻²	VS ¹⁻²	SI ¹⁻²	I ¹⁻³
Flawless	Internally Flawless	Very Very Slightly Included	Very Slightly Included	Slightly Included	Included



ADDITIONAL GRADING INFORMATION

Polish **EXCELLENT**
Symmetry **EXCELLENT**
Fluorescence **NONE**
Inscription(s) **IGI LG747578369**
Comments: This Laboratory Grown Diamond was created by High Pressure High Temperature (HPHT) growth process. Indications of post-growth treatment.



November 12, 2025
IGI Report No **LG747578369**
SQUARE CUSHION MODIFIED BRILLIANT
1.04 CARAT
FANCY VIVID BLUE
VS 1
5.93 X 5.65 X 3.80 MM
67.3%
13%
50.5%
Medium To Thick (Faceted)
Pointed
EXCELLENT
EXCELLENT
NONE
IGI LG747578369

Comments: This Laboratory Grown Diamond was created by High Pressure High Temperature (HPHT) growth process. Indications of post-growth treatment.