



# INTERNATIONAL GEMOLOGICAL INSTITUTE

ELECTRONIC COPY

## LABORATORY GROWN DIAMOND REPORT

November 12, 2025

IGI Report Number

LG747578331

Description

LABORATORY GROWN DIAMOND

Shape and Cutting Style

HEART MODIFIED BRILLIANT

Measurements

4.18 X 4.65 X 2.68 MM

### GRADING RESULTS

Carat Weight

0.40 CARAT

Color Grade

FANCY PINK

Clarity Grade

VS 2

### ADDITIONAL GRADING INFORMATION

Polish

VERY GOOD

Symmetry

VERY GOOD

Fluorescence

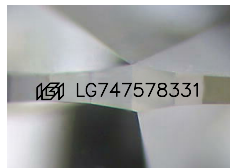
STRONG

Inscription(s)

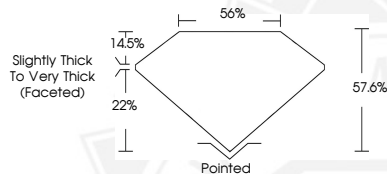
IGI LG747578331

Comments: This Laboratory Grown Diamond was created by Chemical Vapor Deposition (CVD) growth process.

Indications of post-growth treatment.



Sample Image Used



November 12, 2025

IGI Report Number LG747578331

HEART MODIFIED BRILLIANT

LABORATORY GROWN DIAMOND

4.18 X 4.65 X 2.68 MM

Carat Weight 0.40 CARAT

Color Grade FANCY PINK

Clarity Grade VS 2

Polish VERY GOOD

Symmetry VERY GOOD

Fluorescence STRONG

Inscription(s) IGI LG747578331

Comments: This Laboratory Grown Diamond was created by Chemical Vapor Deposition (CVD) growth process. Indications of post-growth treatment.



November 12, 2025

IGI Report Number LG747578331

HEART MODIFIED BRILLIANT

LABORATORY GROWN DIAMOND

4.18 X 4.65 X 2.68 MM

Carat Weight 0.40 CARAT

Color Grade FANCY PINK

Clarity Grade VS 2

Polish VERY GOOD

Symmetry VERY GOOD

Fluorescence STRONG

Inscription(s) IGI LG747578331

Comments: This Laboratory Grown Diamond was created by Chemical Vapor Deposition (CVD) growth process. Indications of post-growth treatment.



THIS DOCUMENT WAS PRODUCED WITH THE FOLLOWING SECURITY MEASURES: SPECIAL DOCUMENT PAPER, INK SCREENS, WATERMARK, BACKGROUND DESIGNS, HOLOGRAM AND OTHER SECURITY FEATURES NOT LISTED AND DO EXCEED DOCUMENT SECURITY INDUSTRY GUIDELINES.

For terms & conditions and to verify this report, please visit [www.igi.org](http://www.igi.org)