



INTERNATIONAL GEMOLOGICAL INSTITUTE

ELECTRONIC COPY

LABORATORY GROWN DIAMOND REPORT

November 12, 2025

IGI Report Number

LG747578294

Description

LABORATORY GROWN DIAMOND

Shape and Cutting Style

HEART MODIFIED BRILLIANT

Measurements

5.06 X 5.89 X 3.27 MM

GRADING RESULTS

Carat Weight

0.75 CARAT

Color Grade

LIGHT PINKISH BROWN

Clarity Grade

VVS 2

ADDITIONAL GRADING INFORMATION

Polish

VERY GOOD

Symmetry

VERY GOOD

Fluorescence

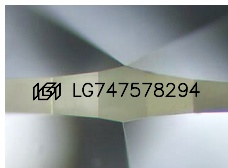
SLIGHT

Inscription(s)

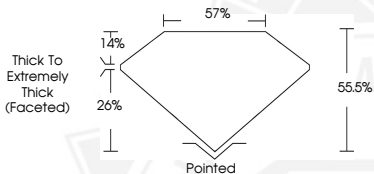
IGI LG747578294

Comments: This Laboratory Grown Diamond was created by Chemical Vapor Deposition (CVD) growth process.

Indications of post-growth treatment.



Sample Image Used



November 12, 2025

IGI Report Number LG747578294

HEART MODIFIED BRILLIANT

LABORATORY GROWN DIAMOND

5.06 X 5.89 X 3.27 MM

Carat Weight 0.75 CARAT

Color Grade LIGHT PINKISH BROWN

Clarity Grade VVS 2

Polish VERY GOOD

Symmetry VERY GOOD

Fluorescence SLIGHT

Inscription(s) IGI LG747578294

Comments: This Laboratory Grown Diamond was created by Chemical Vapor Deposition (CVD) growth process. Indications of post-growth treatment.



November 12, 2025

IGI Report Number LG747578294

HEART MODIFIED BRILLIANT

LABORATORY GROWN DIAMOND

5.06 X 5.89 X 3.27 MM

Carat Weight 0.75 CARAT

Color Grade LIGHT PINKISH BROWN

Clarity Grade VVS 2

Polish VERY GOOD

Symmetry VERY GOOD

Fluorescence SLIGHT

Inscription(s) IGI LG747578294

Comments: This Laboratory Grown Diamond was created by Chemical Vapor Deposition (CVD) growth process. Indications of post-growth treatment.



THIS DOCUMENT WAS PRODUCED WITH THE FOLLOWING SECURITY MEASURES: SPECIAL DOCUMENT PAPER, INK SCREENS, WATERMARK, BACKGROUND DESIGNS, HOLOGRAM AND OTHER SECURITY FEATURES NOT LISTED AND DO EXCEED DOCUMENT SECURITY INDUSTRY GUIDELINES.

For terms & conditions and to verify this report, please visit www.igi.org