



**ELECTRONIC COPY**

LG747577089  
Report verification at igi.org



November 11, 2025  
IGI Report Number **LG747577089**  
Description **LABORATORY GROWN DIAMOND**  
Shape and Cutting Style **CUSHION MODIFIED BRILLIANT**  
Measurements **9.19 X 7.96 X 4.86 MM**  
**GRADING RESULTS**  
Carat Weight **3.00 CARATS**  
Color Grade **FANCY INTENSE PINK**  
Clarity Grade **VVS 2**

**LABORATORY GROWN DIAMOND REPORT**

November 11, 2025  
IGI Report Number **LG747577089**  
Description **LABORATORY GROWN DIAMOND**  
Shape and Cutting Style **CUSHION MODIFIED BRILLIANT**  
Measurements **9.19 X 7.96 X 4.86 MM**

**GRADING RESULTS**

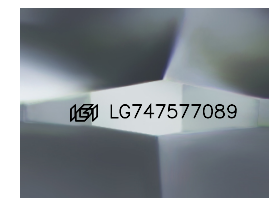
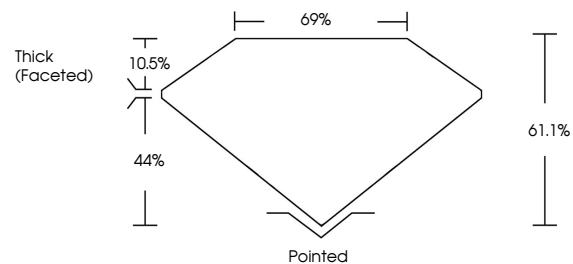
Carat Weight **3.00 CARATS**  
Color Grade **FANCY INTENSE PINK**  
Clarity Grade **VVS 2**

**ADDITIONAL GRADING INFORMATION**

Polish **EXCELLENT**  
Symmetry **EXCELLENT**  
Fluorescence **SLIGHT**  
Inscription(s) **IGI LG747577089**

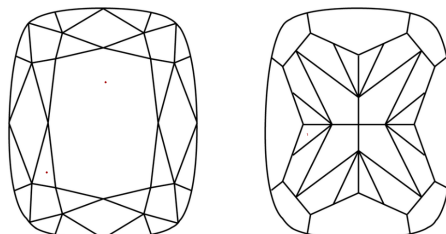
Comments: This Laboratory Grown Diamond was created by Chemical Vapor Deposition (CVD) growth process.  
Indications of post-growth treatment.

**PROPORTIONS**



Sample Image Used

**CLARITY CHARACTERISTICS**



**KEY TO SYMBOLS**

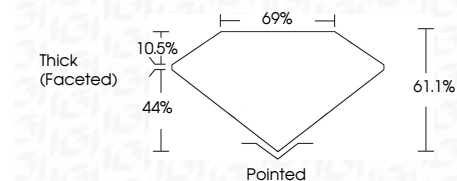
Red symbols indicate internal characteristics.  
Green symbols indicate external characteristics.

**COLOR**

D E F G H I J Faint Very Light Light

**CLARITY**

FL	IF	VVS <sup>1-2</sup>	VS <sup>1-2</sup>	SI <sup>1-2</sup>	I <sup>1-3</sup>
Flawless	Internally Flawless	Very Very Slightly Included	Very Slightly Included	Slightly Included	Included



**ADDITIONAL GRADING INFORMATION**

Polish **EXCELLENT**  
Symmetry **EXCELLENT**  
Fluorescence **SLIGHT**  
Inscription(s) **IGI LG747577089**  
Comments: This Laboratory Grown Diamond was created by Chemical Vapor Deposition (CVD) growth process.  
Indications of post-growth treatment.



November 11, 2025  
IGI Report No LG747577089  
CUSHION MODIFIED BRILLIANT  
3.00 CARATS  
FANCY INTENSE PINK  
VVS 2  
61.1%  
69%  
Thick (Faceted)  
Pointed  
EXCELLENT  
EXCELLENT  
SLIGHT  
IGI LG747577089  
Comments: This Laboratory Grown Diamond was created by Chemical Vapor Deposition (CVD) growth process.  
Indications of post-growth treatment.