



**ELECTRONIC COPY**

LG747573833  
Report verification at igi.org



December 15, 2025  
IGI Report Number **LG747573833**  
Description **LABORATORY GROWN DIAMOND**  
Shape and Cutting Style **SQUARE CUSHION MODIFIED BRILLIANT**  
Measurements **10.61 X 10.51 X 6.87 MM**  
**GRADING RESULTS**  
Carat Weight **7.02 CARATS**  
Color Grade **FANCY DEEP GREEN**  
Clarity Grade **VS 2**

December 15, 2025  
IGI Report Number **LG747573833**  
Description **LABORATORY GROWN DIAMOND**  
Shape and Cutting Style **SQUARE CUSHION MODIFIED BRILLIANT**  
Measurements **10.61 X 10.51 X 6.87 MM**

**GRADING RESULTS**

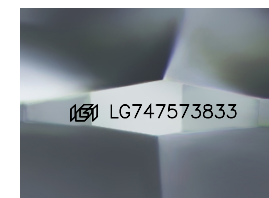
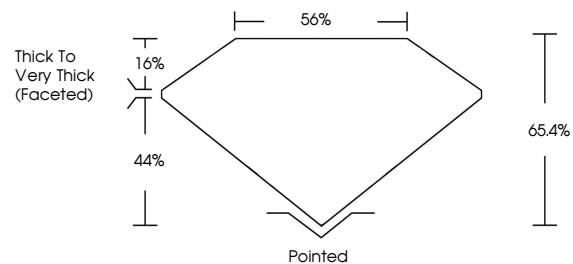
Carat Weight **7.02 CARATS**  
Color Grade **FANCY DEEP GREEN**  
Clarity Grade **VS 2**

**ADDITIONAL GRADING INFORMATION**

Polish **EXCELLENT**  
Symmetry **EXCELLENT**  
Fluorescence **NONE**  
Inscription(s) **IGI LG747573833**

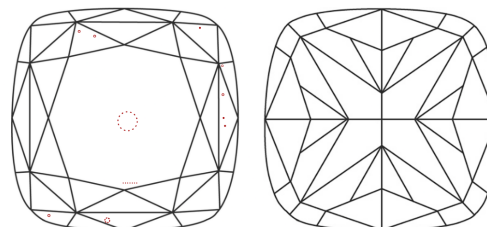
Comments: This Laboratory Grown Diamond was created by Chemical Vapor Deposition (CVD) growth process.  
Indications of post-growth treatment.

**PROPORTIONS**



Sample Image Used

**CLARITY CHARACTERISTICS**



**KEY TO SYMBOLS**

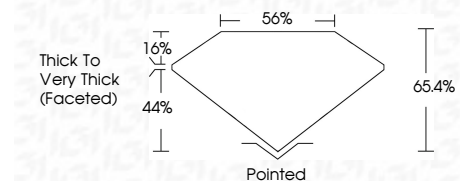
Red symbols indicate internal characteristics.  
Green symbols indicate external characteristics.

**COLOR**

D E F G H I J Faint Very Light Light

**CLARITY**

FL	IF	VS <sup>1-2</sup>	VS <sup>1-2</sup>	SI <sup>1-2</sup>	I <sup>1-3</sup>
Flawless	Internally Flawless	Very Very Slightly Included	Very Slightly Included	Slightly Included	Included



**ADDITIONAL GRADING INFORMATION**

Polish **EXCELLENT**  
Symmetry **EXCELLENT**  
Fluorescence **NONE**  
Inscription(s) **IGI LG747573833**  
Comments: This Laboratory Grown Diamond was created by Chemical Vapor Deposition (CVD) growth process.  
Indications of post-growth treatment.



December 15, 2025  
IGI Report No LG747573833  
**SQUARE CUSHION MODIFIED BRILLIANT**  
10.61 X 10.51 X 6.87 MM  
7.02 CARATS  
FANCY DEEP GREEN  
VS 2  
65.4%  
44%  
16%  
Thick to Very Thick (Faceted)  
Pointed  
EXCELLENT  
EXCELLENT  
NONE  
IGI LG747573833  
Comments: This Laboratory Grown Diamond was created by Chemical Vapor Deposition (CVD) growth process.  
Indications of post-growth treatment.