



ELECTRONIC COPY

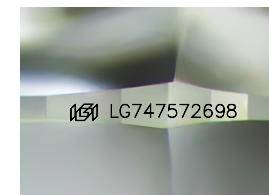
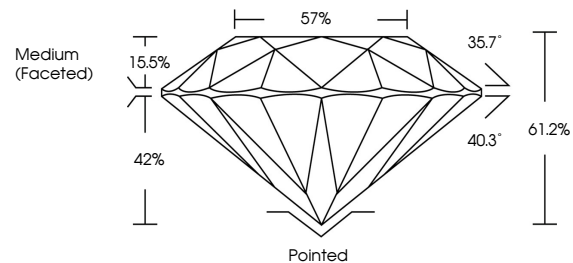
LG747572698
Report verification at igi.org



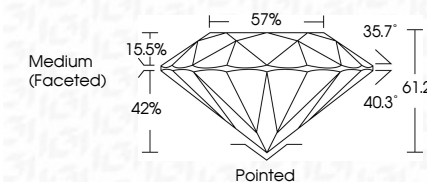
November 28, 2025
IGI Report Number **LG747572698**
Description **LABORATORY GROWN DIAMOND**
Shape and Cutting Style **ROUND BRILLIANT**
Measurements **7.90 - 7.95 X 4.85 MM**
GRADING RESULTS
Carat Weight **1.88 CARAT**
Color Grade **E**
Clarity Grade **VS 1**
Cut Grade **IDEAL**

November 28, 2025
IGI Report Number **LG747572698**
Description **LABORATORY GROWN DIAMOND**
Shape and Cutting Style **ROUND BRILLIANT**
Measurements **7.90 - 7.95 X 4.85 MM**
GRADING RESULTS
Carat Weight **1.88 CARAT**
Color Grade **E**
Clarity Grade **VS 1**
Cut Grade **IDEAL**

PROPORTIONS



Sample Image Used



ADDITIONAL GRADING INFORMATION

Polish **EXCELLENT**
Symmetry **EXCELLENT**
Fluorescence **NONE**
Inscription(s) **IGI LG747572698**

Comments: This Laboratory Grown Diamond was created by Chemical Vapor Deposition (CVD) growth process. Type IIa

ADDITIONAL GRADING INFORMATION

Polish **EXCELLENT**
Symmetry **EXCELLENT**
Fluorescence **NONE**
Inscription(s) **IGI LG747572698**
Comments: This Laboratory Grown Diamond was created by Chemical Vapor Deposition (CVD) growth process. Type IIa

COLOR

D E F G H I J Faint Very Light Light

CLARITY

FL	IF	VS ¹⁻²	VS ¹⁻²	SI ¹⁻²	I ¹⁻³
Flawless	Internally Flawless	Very Very Slightly Included	Very Slightly Included	Slightly Included	Included



IGI



November 28, 2025
IGI Report No **LG747572698**
ROUND BRILLIANT
7.90 - 7.95 X 4.85 MM
1.88 CARAT
Color Grade **E**
Clarity Grade **VS 1**
Cut Grade **IDEAL**
Depth **61.2%**
Table **15.5%**
Girdle **Medium (Faceted)**
Culet **Pointed**
Polish **EXCELLENT**
Symmetry **EXCELLENT**
Fluorescence **NONE**
Inscriptions(s) **IGI LG747572698**
Comments: This Laboratory Grown Diamond was created by Chemical Vapor Deposition (CVD) growth process. Type IIa