



ELECTRONIC COPY

LABORATORY GROWN DIAMOND REPORT

LG747570932
Report verification at igi.org

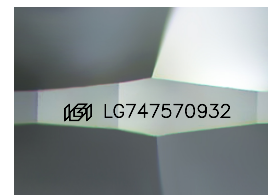
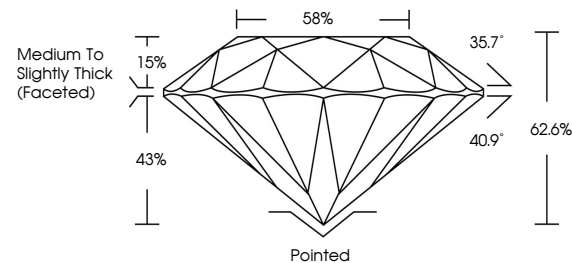
November 6, 2025	
IGI Report Number	LG747570932
Description	LABORATORY GROWN DIAMOND
Shape and Cutting Style	ROUND BRILLIANT
Measurements	8.72 - 8.80 X 5.47 MM
GRADING RESULTS	
Carat Weight	2.59 CARATS
Color Grade	E
Clarity Grade	VVS 2
Cut Grade	EXCELLENT

ADDITIONAL GRADING INFORMATION

Polish	EXCELLENT
Symmetry	EXCELLENT
Fluorescence	NONE
Inscription(s)	 LG747570932

Comments: This Laboratory Grown Diamond was created by Chemical Vapor Deposition (CVD) growth process.
Type IIa

PROPORTIONS



Sample Image Used

COLOR

D E F G H I J Faint Very Light Light

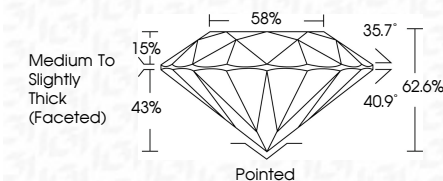
CLARITY

FL	IF	VVS ¹⁻²	VS ¹⁻²	SI ¹⁻²	I ¹⁻³
Flawless	Internally Flawless	Very Very Slightly Included	Very Slightly Included	Slightly Included	Included

LABORATORY GROWN DIAMOND REPORT



November 6, 2025	
IGI Report Number	LG747570932
Description	LABORATORY GROWN DIAMOND
Shape and Cutting Style	ROUND BRILLIANT
Measurements	8.72 - 8.80 X 5.47 MM
GRADING RESULTS	
Carat Weight	2.59 CARATS
Color Grade	E
Clarity Grade	VVS 2
Cut Grade	EXCELLENT



ADDITIONAL GRADING INFORMATION

Polish	EXCELLENT
Symmetry	EXCELLENT
Fluorescence	NONE
Inscription(s)	 LG747570932
<p>Comments: This Laboratory Grown Diamond was created by Chemical Vapor Deposition (CVD) growth process.</p> <p>Type IIa</p>	



© IGI 2020, International Gemological Institute

FD - 10 20



THIS DOCUMENT WAS PRODUCED WITH THE FOLLOWING SECURITY MEASURES: SPECIAL DOCUMENT PAPER, INK SCREENS, WATERMARK, BACKGROUND DESIGNS, HOLOGRAM, AND OTHER SECURITY FEATURES NOT LISTED AND DO EXCEED DOCUMENT SECURITY INDUSTRY GUIDELINES.

www.igi.org

November 6, 2025
GI Report No LG747570932

GR Report No 16747570932	2.59 CARATS	VVS 2	62.0%	55%	Medium to slightly Thick (Faceted)	Polished	EXCELLENT	EXCELLENT	NONE
ROUND BRILLIANT	5.75 - 6.00 X 5.67 MM	Clarity Grade	Color Grade	Cut Grade	Depth	Culet	Polish	Symmetry	Fluorescence
		Excellent	Excellent	Excellent	Table				
		Grade	Grade	Grade	Grade				

Comments:
This Laboratory Grown Diamond was
created by Chemical Vapor Deposition
(CVD) growth process.