



ELECTRONIC COPY

LG747570741
Report verification at igi.org



November 25, 2025
IGI Report Number **LG747570741**
Description **LABORATORY GROWN DIAMOND**
Shape and Cutting Style **CUSHION MODIFIED BRILLIANT**
Measurements **8.33 X 6.73 X 4.65 MM**
GRADING RESULTS
Carat Weight **1.96 CARAT**
Color Grade **H**
Clarity Grade **VS 1**

LABORATORY GROWN DIAMOND REPORT

November 25, 2025
IGI Report Number **LG747570741**
Description **LABORATORY GROWN DIAMOND**
Shape and Cutting Style **CUSHION MODIFIED BRILLIANT**
Measurements **8.33 X 6.73 X 4.65 MM**

GRADING RESULTS

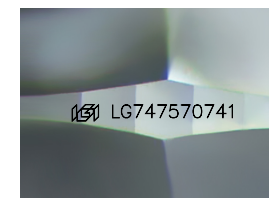
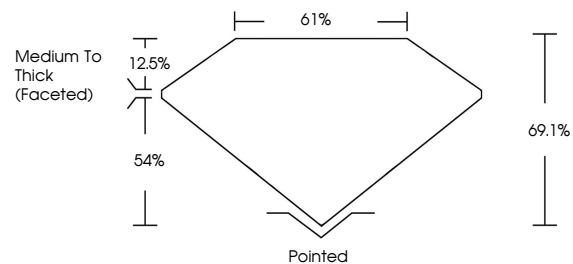
Carat Weight **1.96 CARAT**
Color Grade **H**
Clarity Grade **VS 1**

ADDITIONAL GRADING INFORMATION

Polish **EXCELLENT**
Symmetry **EXCELLENT**
Fluorescence **NONE**
Inscription(s) **IGI LG747570741**

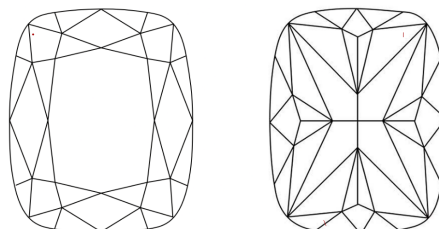
Comments: This Laboratory Grown Diamond was created by Chemical Vapor Deposition (CVD) growth process.
Type IIa

PROPORTIONS



Sample Image Used

CLARITY CHARACTERISTICS



KEY TO SYMBOLS

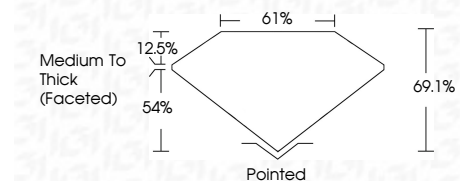
Red symbols indicate internal characteristics.
Green symbols indicate external characteristics.

COLOR

D E F G H I J Faint Very Light Light

CLARITY

FL	IF	VS ¹⁻²	VS ¹⁻²	SI ¹⁻²	I ¹⁻³
Flawless	Internally Flawless	Very Very Slightly Included	Very Slightly Included	Slightly Included	Included



ADDITIONAL GRADING INFORMATION

Polish **EXCELLENT**
Symmetry **EXCELLENT**
Fluorescence **NONE**
Inscription(s) **IGI LG747570741**
Comments: This Laboratory Grown Diamond was created by Chemical Vapor Deposition (CVD) growth process.
Type IIa



November 25, 2025
IGI Report No LG747570741
CUSHION MODIFIED BRILLIANT
8.33 X 6.73 X 4.65 MM
1.96 CARAT H
VS 1
69.1% 61%
Medium To Thick (Faceted)
Pointed
EXCELLENT
EXCELLENT
NONE
IGI LG747570741
Comments: This Laboratory Grown Diamond was created by Chemical Vapor Deposition (CVD) growth process.
Type IIa