



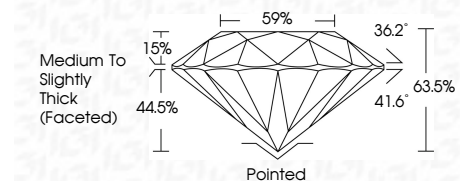
ELECTRONIC COPY

LG747570101 Report verification at igi.org



November 21, 2025 IGI Report Number LG747570101 Description LABORATORY GROWN DIAMOND Shape and Cutting Style ROUND BRILLIANT Measurements 10.74 - 10.82 X 6.85 MM

GRADING RESULTS Carat Weight 4.99 CARATS Color Grade F Clarity Grade VVS 2 Cut Grade EXCELLENT



ADDITIONAL GRADING INFORMATION Polish EXCELLENT Symmetry EXCELLENT Fluorescence NONE Inscription(s) IGI LG747570101 Comments: This Laboratory Grown Diamond was created by Chemical Vapor Deposition (CVD) growth process. Type IIa



November 21, 2025 IGI Report No LG747570101 ROUND BRILLIANT 10.74 - 10.82 X 6.85 MM 4.99 CARATS F Color Grade VVS 2 EXCELLENT 63.5% 59% Medium To Slightly Thick (Faceted) Pointed EXCELLENT EXCELLENT NONE IGI LG747570101

LABORATORY GROWN DIAMOND REPORT

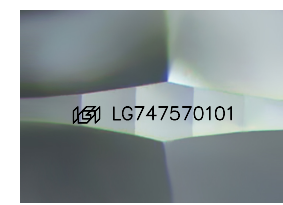
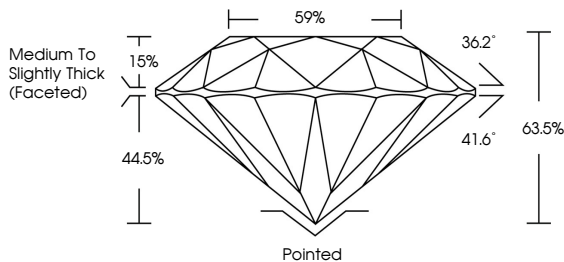
November 21, 2025 IGI Report Number LG747570101 Description LABORATORY GROWN DIAMOND Shape and Cutting Style ROUND BRILLIANT Measurements 10.74 - 10.82 X 6.85 MM

GRADING RESULTS Carat Weight 4.99 CARATS Color Grade F Clarity Grade VVS 2 Cut Grade EXCELLENT

ADDITIONAL GRADING INFORMATION Polish EXCELLENT Symmetry EXCELLENT Fluorescence NONE Inscription(s) IGI LG747570101

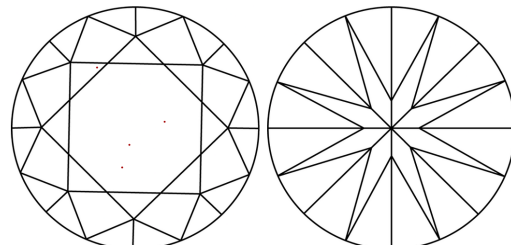
Comments: This Laboratory Grown Diamond was created by Chemical Vapor Deposition (CVD) growth process. Type IIa

PROPORTIONS



Sample Image Used

CLARITY CHARACTERISTICS



KEY TO SYMBOLS Red symbols indicate internal characteristics. Green symbols indicate external characteristics.

Color scale table with categories D, E, F, G, H, I, J, Faint, Very Light, Light

Clarity scale table with categories FL, IF, VVS 1-2, VS 1-2, SI 1-2, I 1-3



THIS DOCUMENT WAS PRODUCED WITH THE FOLLOWING SECURITY MEASURES: SPECIAL DOCUMENT PAPER, INK SCREENS, WATERMARK BACKGROUND DESIGNS, HOLOGRAM AND OTHER SECURITY FEATURES NOT LISTED AND DO EXCEED DOCUMENT SECURITY INDUSTRY GUIDELINES.