



ELECTRONIC COPY

LG747569746
Report verification at igi.org



November 18, 2025

IGI Report Number **LG747569746**

Description **LABORATORY GROWN DIAMOND**

Shape and Cutting Style **ROUND BRILLIANT**

Measurements **8.04 - 8.09 X 4.82 MM**

GRADING RESULTS

Carat Weight **1.90 CARAT**

Color Grade **H**

Clarity Grade **VVS 2**

Cut Grade **IDEAL**

November 18, 2025
IGI Report Number **LG747569746**
Description **LABORATORY GROWN DIAMOND**
Shape and Cutting Style **ROUND BRILLIANT**
Measurements **8.04 - 8.09 X 4.82 MM**

GRADING RESULTS

Carat Weight **1.90 CARAT**

Color Grade **H**

Clarity Grade **VVS 2**

Cut Grade **IDEAL**

ADDITIONAL GRADING INFORMATION

Polish **EXCELLENT**

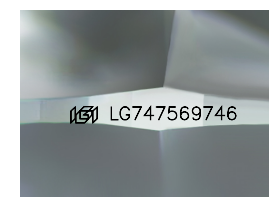
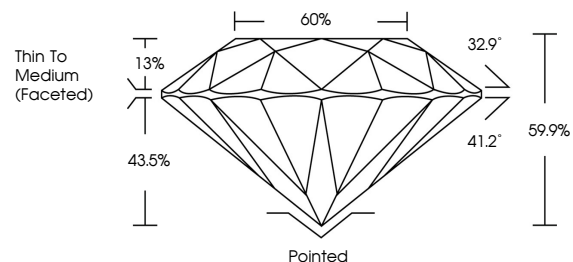
Symmetry **EXCELLENT**

Fluorescence **NONE**

Inscription(s) **IGI LG747569746**

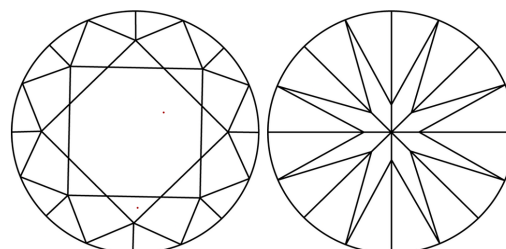
Comments: This Laboratory Grown Diamond was created by Chemical Vapor Deposition (CVD) growth process.
Type IIa

PROPORTIONS



Sample Image Used

CLARITY CHARACTERISTICS



KEY TO SYMBOLS

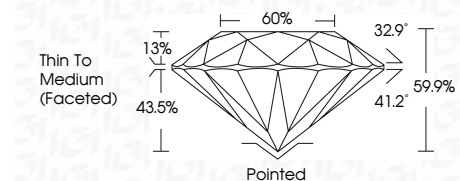
Red symbols indicate internal characteristics.
Green symbols indicate external characteristics.

COLOR

D E F G H I J Faint Very Light Light

CLARITY

FL	IF	VVS ¹⁻²	VS ¹⁻²	SI ¹⁻²	I ¹⁻³
Flawless	Internally Flawless	Very Very Slightly Included	Very Slightly Included	Slightly Included	Included



ADDITIONAL GRADING INFORMATION

Polish **EXCELLENT**

Symmetry **EXCELLENT**

Fluorescence **NONE**

Inscription(s) **IGI LG747569746**

Comments: This Laboratory Grown Diamond was created by Chemical Vapor Deposition (CVD) growth process.
Type IIa



November 18, 2025	1.90 CARAT	H
IGI Report No LG747569746	8.04 - 8.09 X 4.82 MM	VVS 2
ROUND BRILLIANT	Color Grade	IDEAL
	Clarity Grade	60%
	Cut Grade	Thin To Medium (Faceted)
	Table	Pointed
	Depth	EXCELLENT
	Girdle	EXCELLENT
	Culet	NONE
	Polish	EXCELLENT
	Symmetry	EXCELLENT
	Fluorescence	NONE
	Inscription(s)	IGI LG747569746

Comments: This Laboratory Grown Diamond was created by Chemical Vapor Deposition (CVD) growth process.
Type IIa