



**ELECTRONIC COPY**

LG747569680  
Report verification at igi.org



November 18, 2025

IGI Report Number **LG747569680**

Description **LABORATORY GROWN DIAMOND**

Shape and Cutting Style **ROUND BRILLIANT**

Measurements **10.67 - 10.70 X 6.24 MM**

**GRADING RESULTS**

Carat Weight **4.32 CARATS**

Color Grade **G**

Clarity Grade **VS 1**

Cut Grade **EXCELLENT**

**LABORATORY GROWN DIAMOND REPORT**

November 18, 2025

IGI Report Number **LG747569680**

Description **LABORATORY GROWN DIAMOND**

Shape and Cutting Style **ROUND BRILLIANT**

Measurements **10.67 - 10.70 X 6.24 MM**

**GRADING RESULTS**

Carat Weight **4.32 CARATS**

Color Grade **G**

Clarity Grade **VS 1**

Cut Grade **EXCELLENT**

**ADDITIONAL GRADING INFORMATION**

Polish **EXCELLENT**

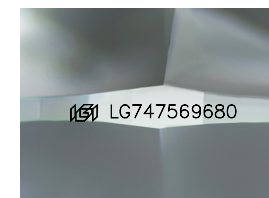
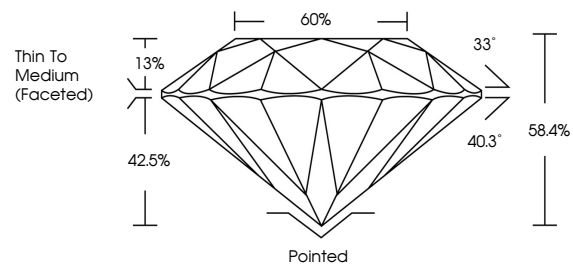
Symmetry **EXCELLENT**

Fluorescence **NONE**

Inscription(s) **IGI LG747569680**

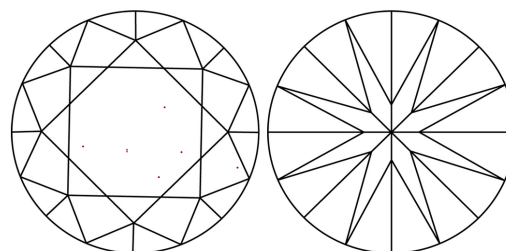
Comments: This Laboratory Grown Diamond was created by Chemical Vapor Deposition (CVD) growth process.  
Type IIa

**PROPORTIONS**



Sample Image Used

**CLARITY CHARACTERISTICS**



**KEY TO SYMBOLS**

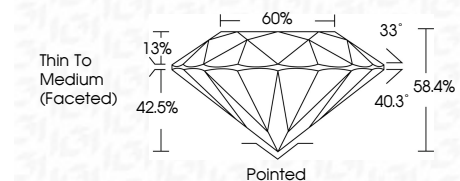
Red symbols indicate internal characteristics.  
Green symbols indicate external characteristics.

**COLOR**

D E F G H I J Faint Very Light Light

**CLARITY**

FL	IF	VS <sup>1-2</sup>	VS <sup>1-2</sup>	SI <sup>1-2</sup>	I <sup>1-3</sup>
Flawless	Internally Flawless	Very Very Slightly Included	Very Slightly Included	Slightly Included	Included



**ADDITIONAL GRADING INFORMATION**

Polish **EXCELLENT**

Symmetry **EXCELLENT**

Fluorescence **NONE**

Inscription(s) **IGI LG747569680**

Comments: This Laboratory Grown Diamond was created by Chemical Vapor Deposition (CVD) growth process.  
Type IIa



**IGI**



November 18, 2025	IGI Report No LG747569680	4.32 CARATS	G	VS 1	EXCELLENT	60%	Thin To Medium (Faceted)	Pointed	EXCELLENT	EXCELLENT	NONE	IGI LG747569680
ROUND BRILLIANT	10.67 - 10.70 X 6.24 MM	Carat Weight	Color Grade	Clarity Grade	Cut Grade	Depth	Table	Girdle	Polish	Symmetry	Fluorescence	Inscription(s)

Comments: This Laboratory Grown Diamond was created by Chemical Vapor Deposition (CVD) growth process.  
Type IIa