



ELECTRONIC COPY

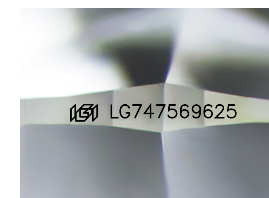
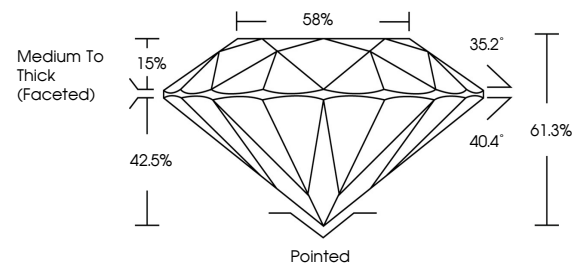
LG747569625
Report verification at igi.org



November 18, 2025
IGI Report Number **LG747569625**
Description **LABORATORY GROWN DIAMOND**
Shape and Cutting Style **ROUND BRILLIANT**
Measurements **8.90 - 8.95 X 5.47 MM**
GRADING RESULTS
Carat Weight **2.72 CARATS**
Color Grade **G**
Clarity Grade **VS 1**
Cut Grade **VERY GOOD**

November 18, 2025
IGI Report Number **LG747569625**
Description **LABORATORY GROWN DIAMOND**
Shape and Cutting Style **ROUND BRILLIANT**
Measurements **8.90 - 8.95 X 5.47 MM**

PROPORTIONS

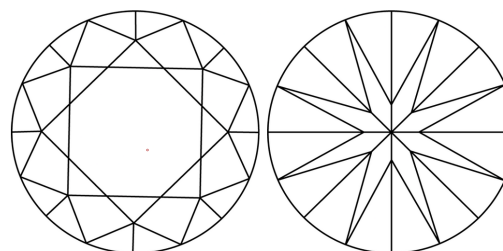


Sample Image Used

GRADING RESULTS

Carat Weight **2.72 CARATS**
Color Grade **G**
Clarity Grade **VS 1**
Cut Grade **VERY GOOD**

CLARITY CHARACTERISTICS



KEY TO SYMBOLS

Red symbols indicate internal characteristics.
Green symbols indicate external characteristics.

ADDITIONAL GRADING INFORMATION

Polish **EXCELLENT**
Symmetry **EXCELLENT**
Fluorescence **NONE**
Inscription(s) **IGI LG747569625**

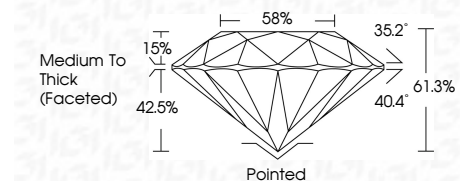
Comments: This Laboratory Grown Diamond was created by Chemical Vapor Deposition (CVD) growth process.
Type IIa

COLOR

D E F G H I J Faint Very Light Light

CLARITY

FL	IF	VS ¹⁻²	VS ¹⁻²	SI ¹⁻²	I ¹⁻³
Flawless	Internally Flawless	Very Very Slightly Included	Very Slightly Included	Slightly Included	Included



ADDITIONAL GRADING INFORMATION

Polish **EXCELLENT**
Symmetry **EXCELLENT**
Fluorescence **NONE**
Inscription(s) **IGI LG747569625**
Comments: This Laboratory Grown Diamond was created by Chemical Vapor Deposition (CVD) growth process.
Type IIa



IGI



November 18, 2025
IGI Report No **LG747569625**
ROUND BRILLIANT
Carat Weight **2.72 CARATS**
Color Grade **G**
Clarity Grade **VS 1**
Cut Grade **VERY GOOD**
Depth **61.3%**
Table **58%**
Girdle **Medium To Thick (Faceted)**
Culet **Pointed**
Polish **EXCELLENT**
Symmetry **EXCELLENT**
Fluorescence **NONE**
Inscription(s) **IGI LG747569625**
Comments: This Laboratory Grown Diamond was created by Chemical Vapor Deposition (CVD) growth process.
Type IIa