



**ELECTRONIC COPY**

LG747566187  
Report verification at igi.org



November 13, 2025  
IGI Report Number **LG747566187**  
Description **LABORATORY GROWN DIAMOND**  
Shape and Cutting Style **SQUARE CUSHION MODIFIED BRILLIANT**

Measurements **6.71 X 6.67 X 4.29 MM**

**GRADING RESULTS**

Carat Weight **1.72 CARAT**  
Color Grade **S-T**  
Clarity Grade **VS 1**

November 13, 2025  
IGI Report Number **LG747566187**  
Description **LABORATORY GROWN DIAMOND**  
Shape and Cutting Style **SQUARE CUSHION MODIFIED BRILLIANT**  
Measurements **6.71 X 6.67 X 4.29 MM**

**GRADING RESULTS**

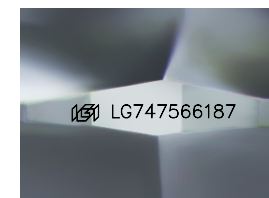
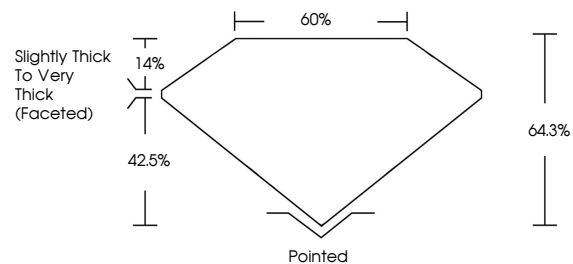
Carat Weight **1.72 CARAT**  
Color Grade **S-T**  
Clarity Grade **VS 1**

**ADDITIONAL GRADING INFORMATION**

Polish **EXCELLENT**  
Symmetry **EXCELLENT**  
Fluorescence **NONE**  
Inscription(s) **IGI LG747566187**

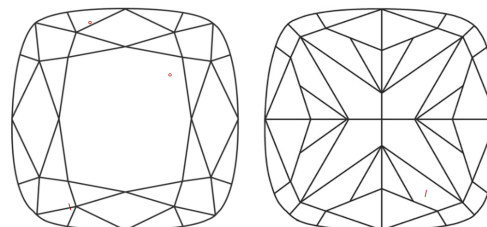
Comments: This Laboratory Grown Diamond was created by Chemical Vapor Deposition (CVD) growth process.  
Type IIa

**PROPORTIONS**



Sample Image Used

**CLARITY CHARACTERISTICS**



**KEY TO SYMBOLS**

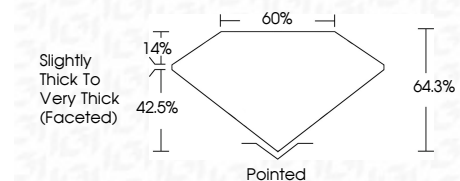
Red symbols indicate internal characteristics.  
Green symbols indicate external characteristics.

**COLOR**

D E F G H I J Faint Very Light Light

**CLARITY**

FL	IF	VS <sup>1-2</sup>	VS <sup>1-2</sup>	SI <sup>1-2</sup>	I <sup>1-3</sup>
Flawless	Internally Flawless	Very Very Slightly Included	Very Slightly Included	Slightly Included	Included



**ADDITIONAL GRADING INFORMATION**

Polish **EXCELLENT**  
Symmetry **EXCELLENT**  
Fluorescence **NONE**  
Inscription(s) **IGI LG747566187**  
Comments: This Laboratory Grown Diamond was created by Chemical Vapor Deposition (CVD) growth process.  
Type IIa



November 13, 2025  
IGI Report No. LG747566187  
**SQUARE CUSHION MODIFIED BRILLIANT**  
6.71 X 6.67 X 4.29 MM  
1.72 CARAT S-T  
Color Grade  
Clarity Grade VS 1  
Table 64.3%  
Depth 42.5%  
Girdle Slightly Thick To Very Thick (Faceted)  
Culet Pointed  
Polish EXCELLENT  
Symmetry EXCELLENT  
Fluorescence NONE  
Inscription(s) IGI LG747566187  
Comments: This Laboratory Grown Diamond was created by Chemical Vapor Deposition (CVD) growth process.  
Type IIa