



ELECTRONIC COPY

LG747564307
Report verification at igi.org



November 13, 2025
IGI Report Number **LG747564307**
Description **LABORATORY GROWN DIAMOND**
Shape and Cutting Style **CUSHION MODIFIED BRILLIANT**
Measurements **8.81 X 6.23 X 4.35 MM**
GRADING RESULTS
Carat Weight **2.01 CARATS**
Color Grade **FANCY INTENSE PINK**
Clarity Grade **VS 1**

LABORATORY GROWN DIAMOND REPORT

November 13, 2025
IGI Report Number **LG747564307**
Description **LABORATORY GROWN DIAMOND**
Shape and Cutting Style **CUSHION MODIFIED BRILLIANT**
Measurements **8.81 X 6.23 X 4.35 MM**

GRADING RESULTS

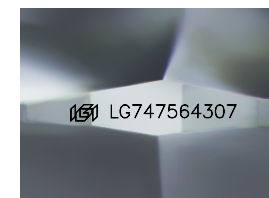
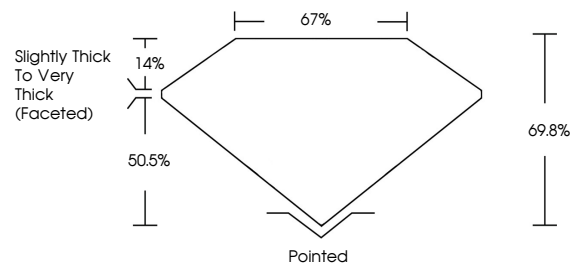
Carat Weight **2.01 CARATS**
Color Grade **FANCY INTENSE PINK**
Clarity Grade **VS 1**

ADDITIONAL GRADING INFORMATION

Polish **VERY GOOD**
Symmetry **EXCELLENT**
Fluorescence **STRONG**
Inscription(s) **IGI LG747564307**

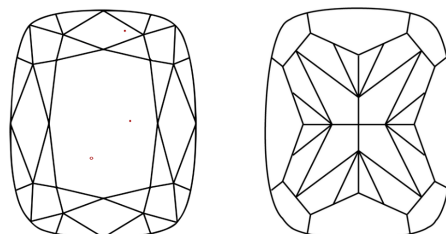
Comments: This Laboratory Grown Diamond was created by Chemical Vapor Deposition (CVD) growth process.
Indications of post-growth treatment.

PROPORTIONS



Sample Image Used

CLARITY CHARACTERISTICS



KEY TO SYMBOLS

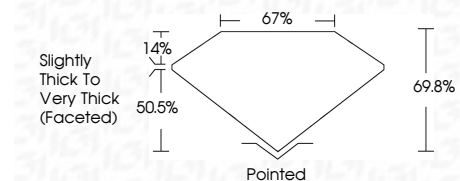
Red symbols indicate internal characteristics.
Green symbols indicate external characteristics.

COLOR

D E F G H I J Faint Very Light Light

CLARITY

FL	IF	VS ¹⁻²	VS ¹⁻²	SI ¹⁻²	I ¹⁻³
Flawless	Internally Flawless	Very Very Slightly Included	Very Slightly Included	Slightly Included	Included



ADDITIONAL GRADING INFORMATION

Polish **VERY GOOD**
Symmetry **EXCELLENT**
Fluorescence **STRONG**
Inscription(s) **IGI LG747564307**
Comments: This Laboratory Grown Diamond was created by Chemical Vapor Deposition (CVD) growth process.
Indications of post-growth treatment.



November 13, 2025
IGI Report No **LG747564307**
CUSHION MODIFIED BRILLIANT
8.81 X 6.23 X 4.35 MM
2.01 CARATS
FANCY INTENSE PINK
Color Grade
Clarity Grade **VS 1**
Depth **69.8%**
Table **67%**
Girdle **Slightly Thick To Very Thick (Faceted)**
Culet **Pointed**
Polish **VERY GOOD**
Symmetry **EXCELLENT**
Fluorescence **STRONG**
Inscription(s) **IGI LG747564307**
Comments: This Laboratory Grown Diamond was created by Chemical Vapor Deposition (CVD) growth process.
Indications of post-growth treatment.