



**ELECTRONIC COPY**

## LABORATORY GROWN DIAMOND REPORT

November 7, 2025	
IGI Report Number	LG747564301
Description	LABORATORY GROWN DIAMOND
Shape and Cutting Style	ROUND BRILLIANT
Measurements	9.01 - 9.04 X 5.50 MM
GRADING RESULTS	
Carat Weight	2.73 CARATS
Color Grade	E
Clarity Grade	VVS 2
Cut Grade	IDEAL

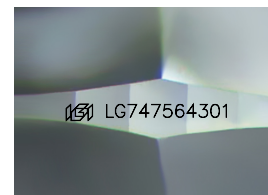
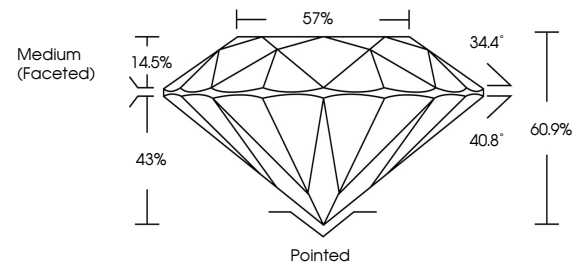
### ADDITIONAL GRADING INFORMATION

Polish	EXCELLENT
Symmetry	EXCELLENT
Fluorescence	NONE
Inscription(s)	 LG747564301

Comments: This Laboratory Grown Diamond was created by Chemical Vapor Deposition (CVD) growth process.  
Type IIa

LG747564301  
Report verification at [igi.org](https://igi.org)

## PROPORTIONS



Sample Image Used

## COLOR

D E F G H I J Faint Very Light Light

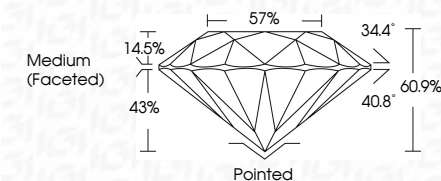
## CLARITY

FL	IF	VVS <sup>1-2</sup>	VS <sup>1-2</sup>	SI <sup>1-2</sup>	I <sup>1-3</sup>
Flawless	Internally Flawless	Very Very Slightly Included	Very Slightly Included	Slightly Included	Included

## LABORATORY GROWN DIAMOND REPORT



November 7, 2025	
IGI Report Number	LG747564301
Description	LABORATORY GROWN DIAMOND
Shape and Cutting Style	ROUND BRILLIANT
Measurements	9.01 - 9.04 X 5.50 MM
GRADING RESULTS	
Carat Weight	2.73 CARATS
Color Grade	E
Clarity Grade	VVS 2
Cut Grade	IDEAL



### ADDITIONAL GRADING INFORMATION

Polish	EXCELLENT
Symmetry	EXCELLENT
Fluorescence	NONE
Inscription(s)	 LG747564301
<p>Comments: This Laboratory Grown Diamond was created by Chemical Vapor Deposition (CVD) growth process.</p> <p>Type IIa</p>	



© IGI 2020, International Gemological Institute

FD - 10 20



THIS DOCUMENT WAS PRODUCED WITH THE FOLLOWING SECURITY MEASURES: SPECIAL DOCUMENT PAPER, INK SCREENS, WATERMARK, BACKGROUND DESIGNS, HOLOGRAM AND OTHER SECURITY FEATURES NOT LISTED AND DO EXCEED DOCUMENT SECURITY INDUSTRY GUIDELINES

**www.igi.org**

November 7, 2025  
 IGI Report No LG747  
 ROUND BRILLIANT

2.01 - 9.04 X 5.50 MM

9.01 - 9.04 X 5.50 MM

Carat Weight

2.73 CARATS

Catali Weig II	Z/3 CARAIS
Color Grade	E

Clarity Grade	WS 2
---------------	------

Quality Grade	VS2	IDEAL
Cut Grade		

Depth	60.9%
-------	-------

Table	57%
Girdle	Medium strength

Girdle	Medium (Faceted)

Culet	Pointed
-------	---------

	Pointed	EXCELLENT
Culet		
Polish		

Polish	EXCELLENT
Symmetry	EXCELLENT

Fluorescence	NONE

Comments:  
Title Laboratory: Crayon Norm and 1,000

**This Laboratory Grown Diamond was  
Created by Chemical Vapor Deposition**

Created by Chemical Vapor Deposition (CVD) growth process, Type IIa

Type IIa