

INTERNATIONAL
GEMOLOGICAL
INSTITUTE

ELECTRONIC COPY

LABORATORY GROWN DIAMOND REPORT

November 6, 2025

IGI Report Number

Description

Shape and Cutting Style

Measurements

LG747554191

LABORATORY GROWN DIAMOND

OVAL BRILLIANT

12.29 x 8.49 x 5.25 mm

GRADING RESULTS

Carat Weight

Color Grade

Clarity Grade

3.45 CARATS

E

VVS 2

ADDITIONAL GRADING INFORMATION

Polish

Symmetry

Fluorescence

Inscription(s)

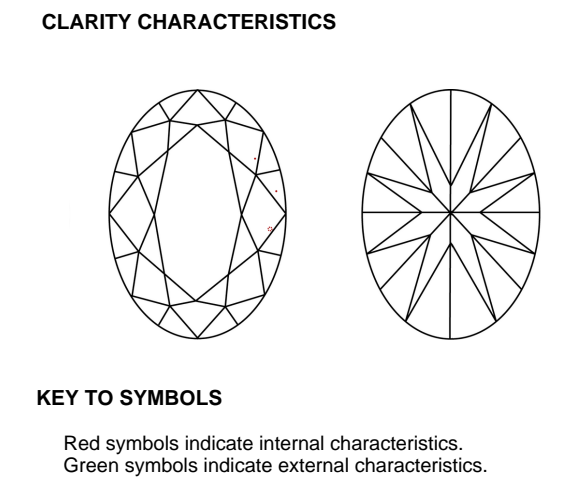
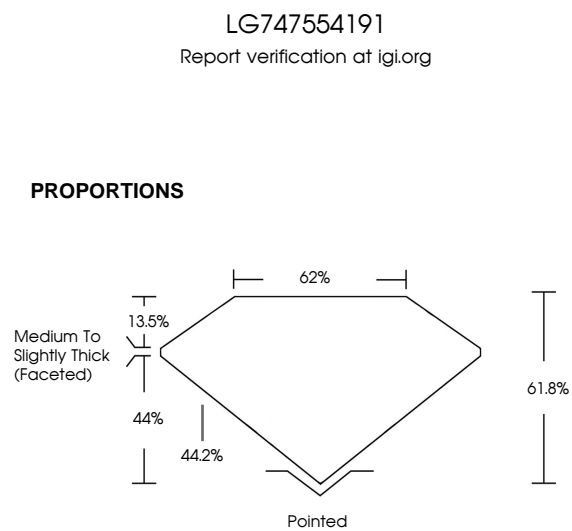
EXCELLENT

EXCELLENT

NONE


IGI LG747554191

Comments: This Laboratory Grown Diamond was created by Chemical Vapor Deposition (CVD) growth process. Type IIa



LIGHT PERFORMANCE REPORT

Light Performance Grade: Exceptional



Structured Light Environment Representation

ModerateHighSuperiorExceptional

Light Performance

Brightness

Fire

Contrast

COLOR

D E F G H I J FaintVery LightLight



CLARITY


FL IF VVS¹⁻² VS¹⁻² SI¹⁻² I¹⁻³

Flawless Internally Flawless Very Very Slightly Included Very Slightly Included Slightly Included Included

© IGI 2020, International Gemological Institute

FD - 10 20





November 6, 2025

IGI Report Number

Description

Shape and Cutting Style

Measurements

LG747554191

LABORATORY GROWN DIAMOND

OVAL BRILLIANT

12.29 X 8.49 X 5.25 MM

GRADING RESULTS

Carat Weight

Color Grade

Clarity Grade

3.45 CARATS

E

VVS 2

ADDITIONAL GRADING INFORMATION

Polish

Symmetry

Fluorescence

Inscription(s)


EXCELLENT

EXCELLENT

NONE

IGI LG747554191

Comments: This Laboratory Grown Diamond was created by Chemical Vapor Deposition (CVD) growth process. Type IIa



IGI

November 6, 2025

IGI Report No LG747554191

OVAL BRILLIANT

12.29 X 8.49 X 5.25 MM

Carat Weight

Color Grade

Depth

Table

Girdle

Clarity Grade

Fluorescence

Inscription(s)

3.45 CARATS

E

VVS 2

61.8%

62%

Medium To Slightly Thick (Faceted)

Pointed

EXCELLENT

EXCELLENT

NONE

IGI LG747554191

Comments: This Laboratory Grown Diamond was created by Chemical Vapor Deposition (CVD) growth process. Type IIa