



# INTERNATIONAL GEMOLOGICAL INSTITUTE

ELECTRONIC COPY

## LABORATORY GROWN DIAMOND REPORT

November 8, 2025

IGI Report Number

LG747551887

Description

LABORATORY GROWN DIAMOND

Shape and Cutting Style

ROUND BRILLIANT

Measurements

5.09 - 5.12 X 3.14 MM

### GRADING RESULTS

Carat Weight

0.50 CARAT

Color Grade

D

Clarity Grade

VVS 2

Cut Grade

VERY GOOD

### ADDITIONAL GRADING INFORMATION

Polish

EXCELLENT

Symmetry

GOOD

Fluorescence

NONE

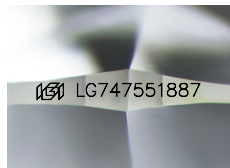
Inscription(s)

IGI LG747551887

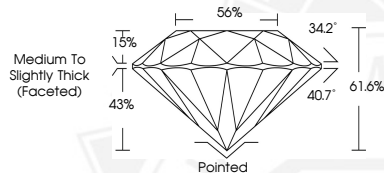
Comments: As Grown - No indication of post-growth treatment.

This Laboratory Grown Diamond was created by High Pressure High Temperature (HPHT) growth process.

Type II



Sample Image Used



November 8, 2025

IGI Report Number LG747551887

ROUND BRILLIANT

LABORATORY GROWN DIAMOND

5.09 - 5.12 X 3.14 MM

Carat Weight 0.50 CARAT

Color Grade D

Clarity Grade VVS 2

Cut Grade VERY GOOD

Polish EXCELLENT

Symmetry GOOD

Fluorescence NONE

Inscription(s) IGI LG747551887

Comments: As Grown - No indication of post-growth treatment. This Laboratory Grown Diamond was created by High Pressure High Temperature (HPHT) growth process. Type II



November 8, 2025

IGI Report Number LG747551887

ROUND BRILLIANT

LABORATORY GROWN DIAMOND

5.09 - 5.12 X 3.14 MM

Carat Weight 0.50 CARAT

Color Grade D

Clarity Grade VVS 2

Cut Grade VERY GOOD

Polish EXCELLENT

Symmetry GOOD

Fluorescence NONE

Inscription(s) IGI LG747551887

Comments: As Grown - No indication of post-growth treatment. This Laboratory Grown Diamond was created by High Pressure High Temperature (HPHT) growth process. Type II



THIS DOCUMENT WAS PRODUCED WITH THE FOLLOWING SECURITY MEASURES: SPECIAL DOCUMENT PAPER, INK SCREENS, WATERMARK, BACKGROUND DESIGNS, HOLOGRAM AND OTHER SECURITY FEATURES NOT LISTED AND DO EXCEED DOCUMENT SECURITY INDUSTRY GUIDELINES.

For terms & conditions and to verify this report, please visit [www.igi.org](http://www.igi.org)