



November 8, 2025

IGI Report Number LG747551823

**ROUND BRILLIANT
LABORATORY GROWN DIAMOND
5.47 - 5.49 X 3.33 MM**

**0.61 CARAT
D
VS 2
IDEAL
EXCELLENT
EXCELLENT
NONE
Inscription(s) IGI LG747551823**

Comments: As Grown - No indication of post-growth treatment. This Laboratory Grown Diamond was created by High Pressure High Temperature (HPHT) growth process. Type II

LABORATORY GROWN DIAMOND REPORT

November 8, 2025
IGI Report Number **LG747551823**
Description **LABORATORY GROWN DIAMOND**
Shape and Cutting Style **ROUND BRILLIANT**
Measurements **5.47 - 5.49 X 3.33 MM**

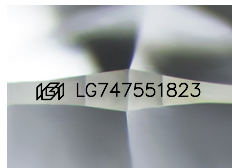
GRADING RESULTS

Carat Weight **0.61 CARAT**
Color Grade **D**
Clarity Grade **VS 2**
Cut Grade **IDEAL**

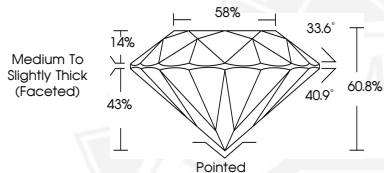
ADDITIONAL GRADING INFORMATION

Polish **EXCELLENT**
Symmetry **EXCELLENT**
Fluorescence **NONE**
Inscription(s) **IGI LG747551823**

Comments: As Grown - No indication of post-growth treatment. This Laboratory Grown Diamond was created by High Pressure High Temperature (HPHT) growth process. Type II



Sample Image Used



November 8, 2025

IGI Report Number LG747551823

**ROUND BRILLIANT
LABORATORY GROWN DIAMOND
5.47 - 5.49 X 3.33 MM**

**0.61 CARAT
D
VS 2
IDEAL
EXCELLENT
EXCELLENT
NONE
Inscription(s) IGI LG747551823**

Comments: As Grown - No indication of post-growth treatment. This Laboratory Grown Diamond was created by High Pressure High Temperature (HPHT) growth process. Type II



THIS DOCUMENT WAS PRODUCED WITH THE FOLLOWING SECURITY MEASURES: SPECIAL DOCUMENT PAPER, INK SCREENS, WATERMARK, BACKGROUND DESIGNS, HOLOGRAM AND OTHER SECURITY FEATURES NOT LISTED AND DO EXCEED DOCUMENT SECURITY INDUSTRY GUIDELINES.