



ELECTRONIC COPY

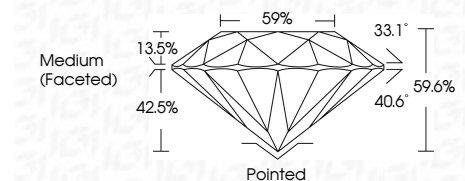
LG747551630
Report verification at igi.org



November 6, 2025
IGI Report Number **LG747551630**
Description **LABORATORY GROWN DIAMOND**
Shape and Cutting Style **ROUND BRILLIANT**
Measurements **6.63 - 6.67 X 3.97 MM**

GRADING RESULTS

Carat Weight **1.08 CARAT**
Color Grade **D**
Clarity Grade **SI 1**
Cut Grade **IDEAL**



ADDITIONAL GRADING INFORMATION

Polish **EXCELLENT**
Symmetry **EXCELLENT**
Fluorescence **NONE**
Inscription(s) **IGI LG747551630**
Comments: This Laboratory Grown Diamond was created by Chemical Vapor Deposition (CVD) growth process. Type IIa



November 6, 2025
IGI Report No LG747551630
ROUND BRILLIANT
6.63 - 6.67 X 3.97 MM
1.08 CARAT
Color Grade **D**
Clarity Grade **SI 1**
Cut Grade **IDEAL**
Depth **59.6%**
Table **59%**
Girdle **Medium (Faceted)**
Culet **Pointed**
Polish **EXCELLENT**
Symmetry **EXCELLENT**
Fluorescence **NONE**
Inscription(s) **IGI LG747551630**
Comments: This Laboratory Grown Diamond was created by Chemical Vapor Deposition (CVD) growth process. Type IIa

November 6, 2025
IGI Report Number **LG747551630**
Description **LABORATORY GROWN DIAMOND**
Shape and Cutting Style **ROUND BRILLIANT**
Measurements **6.63 - 6.67 X 3.97 MM**

GRADING RESULTS

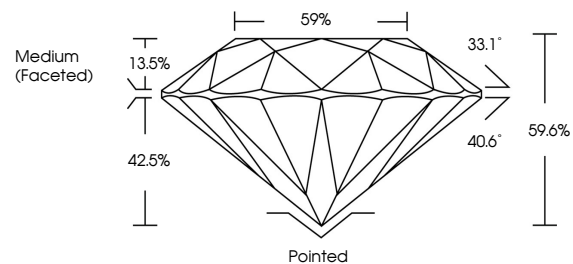
Carat Weight **1.08 CARAT**
Color Grade **D**
Clarity Grade **SI 1**
Cut Grade **IDEAL**

ADDITIONAL GRADING INFORMATION

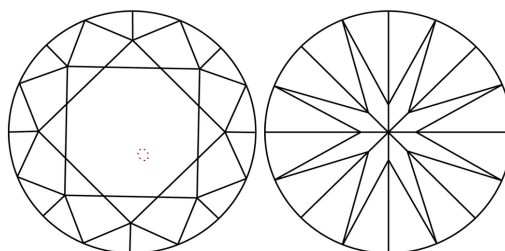
Polish **EXCELLENT**
Symmetry **EXCELLENT**
Fluorescence **NONE**
Inscription(s) **IGI LG747551630**

Comments: This Laboratory Grown Diamond was created by Chemical Vapor Deposition (CVD) growth process. Type IIa

PROPORTIONS

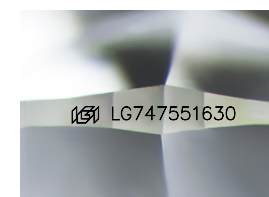


CLARITY CHARACTERISTICS



KEY TO SYMBOLS

Red symbols indicate internal characteristics.
Green symbols indicate external characteristics.



Sample Image Used

COLOR

D E F G H I J Faint Very Light Light

CLARITY

FL	IF	VS ¹⁻²	VS ¹⁻²	SI ¹⁻²	I ¹⁻³
Flawless	Internally Flawless	Very Very Slightly Included	Very Slightly Included	Slightly Included	Included

