



**ELECTRONIC COPY**

## LABORATORY GROWN DIAMOND REPORT

|                         |                          |
|-------------------------|--------------------------|
| November 6, 2025        |                          |
| IGI Report Number       | LG747551397              |
| Description             | LABORATORY GROWN DIAMOND |
| Shape and Cutting Style | ROUND BRILLIANT          |
| Measurements            | 8.21 - 8.30 X 5.09 MM    |

## GRADING RESULTS

|               |             |
|---------------|-------------|
| Carat Weight  | 2.12 CARATS |
| Color Grade   | E           |
| Clarity Grade | VS 1        |
| Cut Grade     | EXCELLENT   |

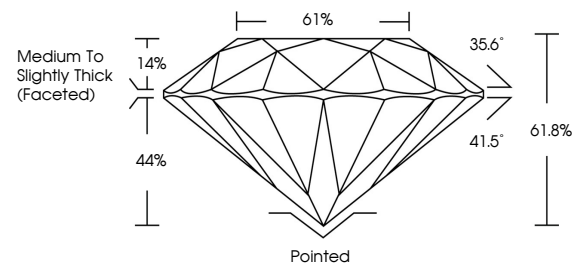
### ADDITIONAL GRADING INFORMATION

|                |   |
|----------------|---|
| Polish         | EXCELLENT   |
| Symmetry       | EXCELLENT   |
| Fluorescence   | NONE  |
| Inscription(s) |  LG747551397 |

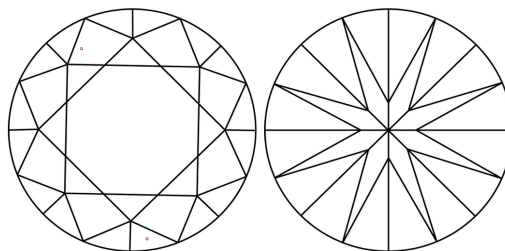
Comments: This Laboratory Grown Diamond was created by Chemical Vapor Deposition (CVD) growth process.  
Type IIa

LG747551397  
Report verification at [igi.org](http://igi.org)

## PROPORTIONS

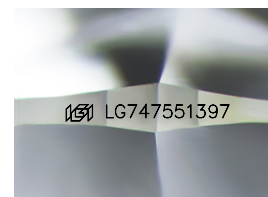


## CLARITY CHARACTERISTICS



## KEY TO SYMBOLS

Red symbols indicate internal characteristics.  
Green symbols indicate external characteristics.



Sample Image Used

**COLOR**

D E F G H I J Faint Very Light Light

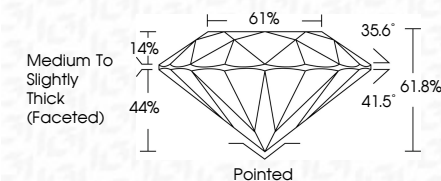
## CLARITY

| FL       | IF                  | VVS <sup>1-2</sup>          | VS <sup>1-2</sup>      | SI <sup>1-2</sup> | I <sup>1-3</sup> |
|----------|---------------------|-----------------------------|------------------------|-------------------|------------------|
| Flawless | Internally Flawless | Very Very Slightly Included | Very Slightly Included | Slightly Included | Included         |


## LABORATORY GROWN DIAMOND REPORT



|                         |                          |
|-------------------------|--------------------------|
| November 6, 2025        |                          |
| IGI Report Number       | LG747551397              |
| Description             | LABORATORY GROWN DIAMOND |
| Shape and Cutting Style | ROUND BRILLIANT          |
| Measurements            | 8.21 - 8.30 X 5.09 MM    |
| GRADING RESULTS         |                          |
| Carat Weight            | 2.12 CARATS              |
| Color Grade             | E                        |
| Clarity Grade           | VS 1                     |
| Cut Grade               | EXCELLENT                |



### ADDITIONAL GRADING INFORMATION

|  |   |
|--|---|
| Polish   | EXCELLENT   |
| Symmetry   | EXCELLENT   |
| Fluorescence   | NONE  |
| Inscription(s)   |  LG747551397 |
| Comments: This Laboratory Grown Diamond was created by Chemical Vapor Deposition (CVD) growth process. |   |
| Type IIa   |   |



© IGI 2020, International Gemological Institute

FD - 10 20



THIS DOCUMENT WAS PRODUCED WITH THE FOLLOWING SECURITY MEASURES: SPECIAL DOCUMENT PAPER, INK SCREENS, WATERMARK, BACKGROUND DESIGNS, HOLOGRAM AND OTHER SECURITY FEATURES NOT LISTED AND DO EXCEED DOCUMENT SECURITY INDUSTRY GUIDELINES

**www.igi.org**

November 6, 2025  
GI Report No LG747551397  
ROUND BRILLIANT

|                        |               |                                    |
|------------------------|---------------|------------------------------------|
| 2.121 - 8.30 X 5.09 MM | Carat Weight  | 2.12 CARATS                        |
|                        | Color Grade   | E                                  |
|                        | Clarity Grade | VS 1                               |
|                        | Cut Grade     | EXCELLENT                          |
|                        | Depth         | 61.6%                              |
|                        | Table         | 61%                                |
|                        | Grade         | Medium to Slightly Thick (Faceted) |
|                        | Culet         | Pointed                            |
|                        | Polish        | EXCELLENT                          |
|                        | Symmetry      | EXCELLENT                          |
|                        | Fluorescence  | NONE                               |
|                        | Fluorescence  | 4mm / 127.075E902                  |

**Comments:**  
This Laboratory Grown Diamond was created by Chemical Vapor Deposition (CVD) growth process.