



ELECTRONIC COPY

LG747551381
Report verification at igi.org



November 11, 2025
IGI Report Number **LG747551381**
Description **LABORATORY GROWN DIAMOND**
Shape and Cutting Style **SQUARE CUSHION MODIFIED BRILLIANT**
Measurements **7.00 X 6.86 X 4.86 MM**
GRADING RESULTS
Carat Weight **2.19 CARATS**
Color Grade **FANCY LIGHT YELLOW**
Clarity Grade **VVS 2**

LABORATORY GROWN DIAMOND REPORT

November 11, 2025
IGI Report Number **LG747551381**
Description **LABORATORY GROWN DIAMOND**
Shape and Cutting Style **SQUARE CUSHION MODIFIED BRILLIANT**
Measurements **7.00 X 6.86 X 4.86 MM**

GRADING RESULTS

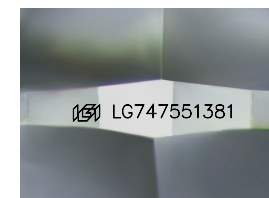
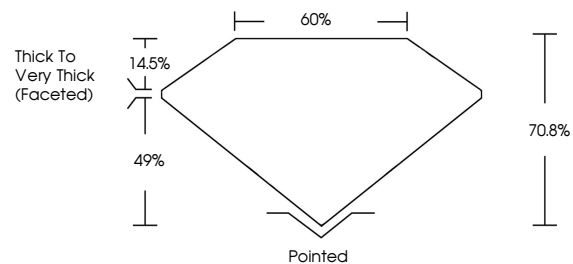
Carat Weight **2.19 CARATS**
Color Grade **FANCY LIGHT YELLOW**
Clarity Grade **VVS 2**

ADDITIONAL GRADING INFORMATION

Polish **EXCELLENT**
Symmetry **EXCELLENT**
Fluorescence **NONE**
Inscription(s) **IGI LG747551381**

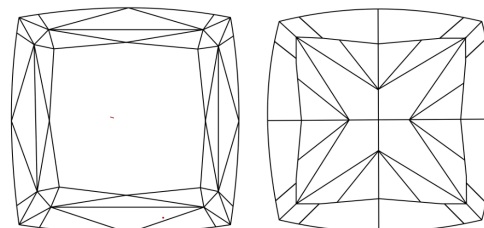
Comments: This Laboratory Grown Diamond was created by Chemical Vapor Deposition (CVD) growth process.

PROPORTIONS



Sample Image Used

CLARITY CHARACTERISTICS



KEY TO SYMBOLS

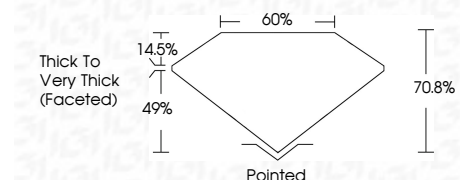
Red symbols indicate internal characteristics.
Green symbols indicate external characteristics.

COLOR

D E F G H I J Faint Very Light Light

CLARITY

FL	IF	VVS ¹⁻²	VS ¹⁻²	SI ¹⁻²	I ¹⁻³
Flawless	Internally Flawless	Very Very Slightly Included	Very Slightly Included	Slightly Included	Included



ADDITIONAL GRADING INFORMATION

Polish **EXCELLENT**
Symmetry **EXCELLENT**
Fluorescence **NONE**
Inscription(s) **IGI LG747551381**
Comments: This Laboratory Grown Diamond was created by Chemical Vapor Deposition (CVD) growth process.



IGI



November 11, 2025
IGI Report No LG747551381
SQUARE CUSHION MODIFIED BRILLIANT
7.00 X 6.86 X 4.86 MM
2.19 CARATS
FANCY LIGHT YELLOW
VVS 2
70.8%
49%
14.5%
Thick To Very Thick (Faceted)
Pointed
EXCELLENT
EXCELLENT
NONE
IGI LG747551381
Comments: This Laboratory Grown Diamond was created by Chemical Vapor Deposition (CVD) growth process.