



November 5, 2025

IGI Report Number **LG747548173**

**ROUND BRILLIANT  
LABORATORY GROWN DIAMOND  
4.42 - 4.44 X 2.68 MM**

Carat Weight	<b>0.32 CARAT</b>
Color Grade	<b>E</b>
Clarity Grade	<b>VS 2</b>
Cut Grade	<b>EXCELLENT</b>
Polish	<b>EXCELLENT</b>
Symmetry	<b>EXCELLENT</b>
Fluorescence	<b>NONE</b>
Inscription(s)	<b>IGI LG747548173</b>

Comments: This Laboratory Grown Diamond was created by Chemical Vapor Deposition (CVD) growth process. Type IIa

**LABORATORY GROWN DIAMOND REPORT**

November 5, 2025  
IGI Report Number **LG747548173**  
Description **LABORATORY GROWN DIAMOND**  
Shape and Cutting Style **ROUND BRILLIANT**  
Measurements **4.42 - 4.44 X 2.68 MM**

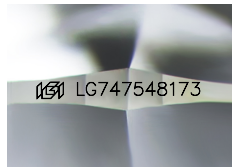
**GRADING RESULTS**

Carat Weight **0.32 CARAT**  
Color Grade **E**  
Clarity Grade **VS 2**  
Cut Grade **EXCELLENT**

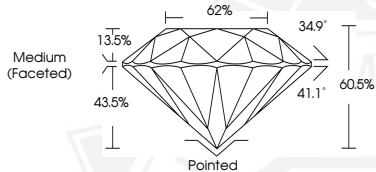
**ADDITIONAL GRADING INFORMATION**

Polish **EXCELLENT**  
Symmetry **EXCELLENT**  
Fluorescence **NONE**  
Inscription(s) **IGI LG747548173**

Comments: This Laboratory Grown Diamond was created by Chemical Vapor Deposition (CVD) growth process. Type IIa



Sample Image Used



November 5, 2025

IGI Report Number **LG747548173**

**ROUND BRILLIANT  
LABORATORY GROWN DIAMOND  
4.42 - 4.44 X 2.68 MM**

Carat Weight	<b>0.32 CARAT</b>
Color Grade	<b>E</b>
Clarity Grade	<b>VS 2</b>
Cut Grade	<b>EXCELLENT</b>
Polish	<b>EXCELLENT</b>
Symmetry	<b>EXCELLENT</b>
Fluorescence	<b>NONE</b>
Inscription(s)	<b>IGI LG747548173</b>

Comments: This Laboratory Grown Diamond was created by Chemical Vapor Deposition (CVD) growth process. Type IIa



THIS DOCUMENT WAS PRODUCED WITH THE FOLLOWING SECURITY MEASURES: SPECIAL DOCUMENT PAPER, INK SCREENS, WATERMARK, BACKGROUND DESIGNS, HOLOGRAM AND OTHER SECURITY FEATURES NOT LISTED AND DO EXCEED DOCUMENT SECURITY INDUSTRY GUIDELINES.