



**INTERNATIONAL
GEMOLOGICAL
INSTITUTE**

ELECTRONIC COPY

LABORATORY GROWN DIAMOND REPORT

| | |
|-------------------------|--------------------------|
| November 5, 2025 | |
| IGI Report Number | LG747545822 |
| Description | LABORATORY GROWN DIAMOND |
| Shape and Cutting Style | ROUND BRILLIANT |
| Measurements | 8.16 - 8.18 X 5.07 MM |

GRADING RESULTS

| | |
|---------------|-------------|
| Carat Weight | 2.08 CARATS |
| Color Grade | D |
| Clarity Grade | VS 1 |
| Cut Grade | IDEAL |

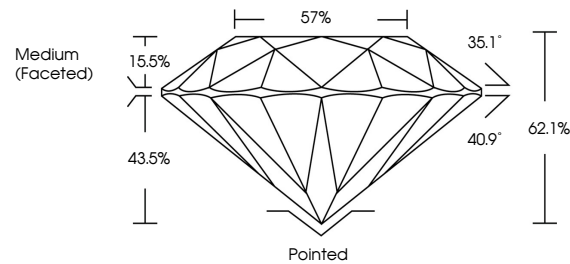
ADDITIONAL GRADING INFORMATION

| | |
|----------------|---|
| Polish | EXCELLENT |
| Symmetry | EXCELLENT |
| Fluorescence | NONE |
| Inscription(s) |  LG747545822 |

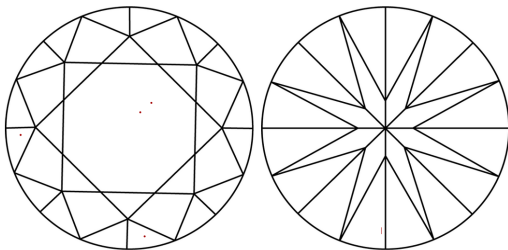
Comments: HEARTS & ARROWS
This Laboratory Grown Diamond was created by
Chemical Vapor Deposition (CVD) growth process.
Type IIa

LG747545822
Report verification at igi.org

PROPORTIONS

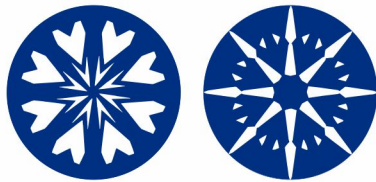


CLARITY CHARACTERISTICS

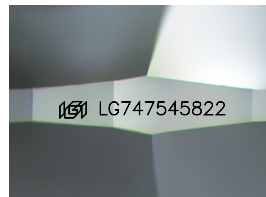


KEY TO SYMBOLS

Red symbols indicate internal characteristics.
Green symbols indicate external characteristics.



www.igi.org



Sample Image Used

COLOR

D E F G H I J Faint Very Light Light

CLARITY

| FL | IF | VVS ¹⁻² | VS ¹⁻² | SI ¹⁻² | I ¹⁻³ |
|----------|---------------------|-----------------------------|------------------------|-------------------|------------------|
| Flawless | Internally Flawless | Very Very Slightly Included | Very Slightly Included | Slightly Included | Included |



© IGI 2020, International Gemological Institute

FD - 10 20

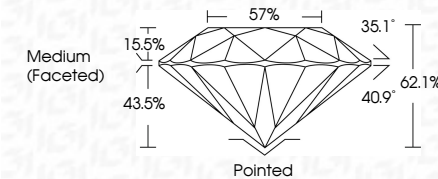
LABORATORY GROWN DIAMOND REPORT



| | |
|-------------------------|--------------------------|
| November 5, 2025 | |
| IGI Report Number | LG747545822 |
| Description | LABORATORY GROWN DIAMOND |
| Shape and Cutting Style | ROUND BRILLIANT |
| Measurements | 8.16 - 8.18 X 5.07 MM |

GRADING RESULTS

| | |
|---------------|-------------|
| Carat Weight | 2.08 CARATS |
| Color Grade | D |
| Clarity Grade | VS 1 |
| Cut Grade | IDEAL |



ADDITIONAL GRADING INFORMATION

| | |
|--|---|
| Polish | EXCELLENT |
| Symmetry | EXCELLENT |
| Fluorescence | NONE |
| Inscription(s) |  LG747545822 |
| Comments: HEARTS & ARROWS This Laboratory Grown Diamond was created by Chemical Vapor Deposition (CVD) growth process. Type IIa | |



IG

| | |
|--|------------------|
| November 5, 2025 | |
| IGI Report No. 1G74754692 | |
| ROUND BRILLIANT | |
| 1.16 - 1.16 x 1.18 x 5.07 MM | 2.08 CARATS |
| Color Weight | D |
| Color Grade | Vs1 |
| Clarity Grade | IDEAL |
| Cut Grade | 62 1% |
| Depth | 57% |
| Table | |
| Grade | Medium (Faceted) |
| Quiet | Polished |
| Polish | EXCELLENT |
| Symmetry | EXCELLENT |
| Fluorescence | NONE |
| Inclusions(s) | 1691 1574754692 |
| Comments: | |
| HEARTS & ARROWS | |
| This Laboratory Grown Diamond was | |
| certified by Chemical Vapor Deposition | |
| (CVD) using the HPHT growth process. | |
| Yield | |

Comments:
HEARTS & ARROWS
This Laboratory Gro
created by Chemid
(CVD) growth proc
Two ill