



**ELECTRONIC COPY**

LG747532228  
Report verification at igi.org



November 17, 2025  
IGI Report Number **LG747532228**  
Description **LABORATORY GROWN DIAMOND**  
Shape and Cutting Style **SQUARE CUSHION MODIFIED BRILLIANT**  
Measurements **9.07 X 8.57 X 5.26 MM**  
**GRADING RESULTS**  
Carat Weight **3.44 CARATS**  
Color Grade **FANCY VIVID PINK**  
Clarity Grade **VS 1**

November 17, 2025  
IGI Report Number **LG747532228**  
Description **LABORATORY GROWN DIAMOND**  
Shape and Cutting Style **SQUARE CUSHION MODIFIED BRILLIANT**  
Measurements **9.07 X 8.57 X 5.26 MM**

**GRADING RESULTS**

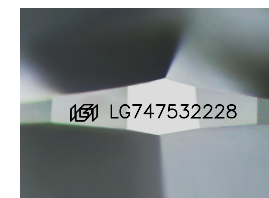
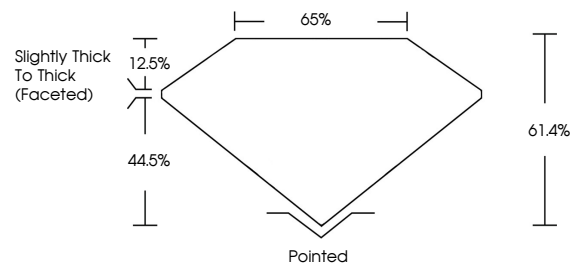
Carat Weight **3.44 CARATS**  
Color Grade **FANCY VIVID PINK**  
Clarity Grade **VS 1**

**ADDITIONAL GRADING INFORMATION**

Polish **EXCELLENT**  
Symmetry **EXCELLENT**  
Fluorescence **STRONG**  
Inscription(s) **IGI LG747532228**

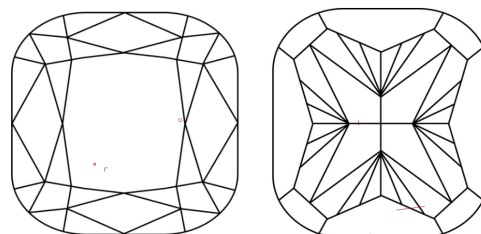
Comments: This Laboratory Grown Diamond was created by Chemical Vapor Deposition (CVD) growth process. Indications of post-growth treatment.

**PROPORTIONS**



Sample Image Used

**CLARITY CHARACTERISTICS**



**KEY TO SYMBOLS**

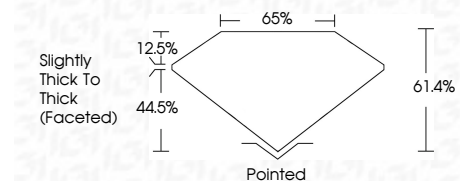
Red symbols indicate internal characteristics.  
Green symbols indicate external characteristics.

**COLOR**

D E F G H I J Faint Very Light Light

**CLARITY**

FL	IF	VS <sup>1-2</sup>	VS <sup>1-2</sup>	SI <sup>1-2</sup>	I <sup>1-3</sup>
Flawless	Internally Flawless	Very Very Slightly Included	Very Slightly Included	Slightly Included	Included



**ADDITIONAL GRADING INFORMATION**

Polish **EXCELLENT**  
Symmetry **EXCELLENT**  
Fluorescence **STRONG**  
Inscription(s) **IGI LG747532228**  
Comments: This Laboratory Grown Diamond was created by Chemical Vapor Deposition (CVD) growth process. Indications of post-growth treatment.



November 17, 2025  
IGI Report No LG747532228  
**SQUARE CUSHION MODIFIED BRILLIANT**  
9.07 X 8.57 X 5.26 MM  
3.44 CARATS  
FANCY VIVID PINK  
VS 1  
61.4%  
65%  
Slightly Thick To Thick (Faceted)  
Pointed  
EXCELLENT  
EXCELLENT  
STRONG  
IGI LG747532228  
Comments: This Laboratory Grown Diamond was created by Chemical Vapor Deposition (CVD) growth process. Indications of post-growth treatment.