



**ELECTRONIC COPY**

LG747532031  
Report verification at [igi.org](http://igi.org)



November 18, 2025

IGI Report Number **LG747532031**

Description **LABORATORY GROWN DIAMOND**

Shape and Cutting Style **CUT CORNERED  
RECTANGULAR MODIFIED  
BRILLIANT**

Measurements **7.63 X 5.27 X 3.66 MM**

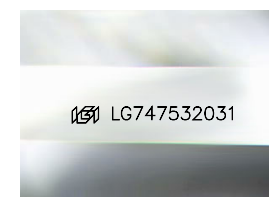
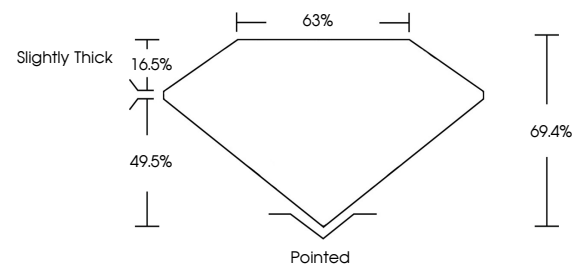
**GRADING RESULTS**

Carat Weight **1.28 CARAT**

Color Grade **D**

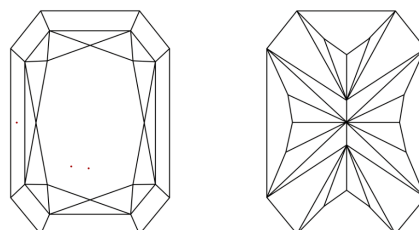
Clarity Grade **VVS 2**

**PROPORTIONS**



Sample Image Used

**CLARITY CHARACTERISTICS**



**KEY TO SYMBOLS**

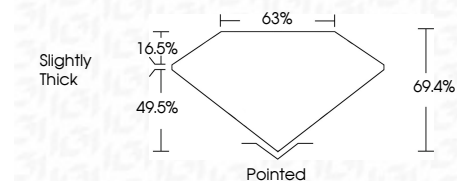
Red symbols indicate internal characteristics.  
Green symbols indicate external characteristics.

**COLOR**

D E F G H I J Faint Very Light Light

**CLARITY**

FL	IF	VVS <sup>1-2</sup>	VS <sup>1-2</sup>	SI <sup>1-2</sup>	I <sup>1-3</sup>
Flawless	Internally Flawless	Very Very Slightly Included	Very Slightly Included	Slightly Included	Included



**ADDITIONAL GRADING INFORMATION**

Polish **EXCELLENT**

Symmetry **EXCELLENT**

Fluorescence **NONE**

Inscription(s) **IGI LG747532031**

Comments: This Laboratory Grown Diamond was created by Chemical Vapor Deposition (CVD) growth process. Type IIa



**IGI**



November 18, 2025	IGI Report No. LG747532031	CUT CORNERED RECT. MODIFIED BRILLIANT
7.63 X 5.27 X 3.66 MM	1.28 CARAT	D
Color Grade	VVS 2	69.4%
Depth	63%	Slightly Thick
Table	Pointed	EXCELLENT
Graints	Symmetry	EXCELLENT
Culet	Fluorescence	NONE
Polish	Inscription(s)	IGI LG747532031

Comments: This Laboratory Grown Diamond was created by Chemical Vapor Deposition (CVD) growth process. Type IIa