



ELECTRONIC COPY

LG747530931
Report verification at igi.org



December 9, 2025

IGI Report Number **LG747530931**

Description **LABORATORY GROWN DIAMOND**

Shape and Cutting Style **ROUND BRILLIANT**

Measurements **8.12 - 8.15 X 5.01 MM**

GRADING RESULTS

Carat Weight **2.04 CARATS**

Color Grade **D**

Clarity Grade **VVS 2**

Cut Grade **IDEAL**

December 9, 2025

IGI Report Number **LG747530931**

Description **LABORATORY GROWN DIAMOND**

Shape and Cutting Style **ROUND BRILLIANT**

Measurements **8.12 - 8.15 X 5.01 MM**

GRADING RESULTS

Carat Weight **2.04 CARATS**

Color Grade **D**

Clarity Grade **VVS 2**

Cut Grade **IDEAL**

ADDITIONAL GRADING INFORMATION

Polish **EXCELLENT**

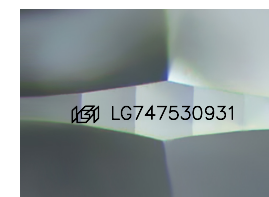
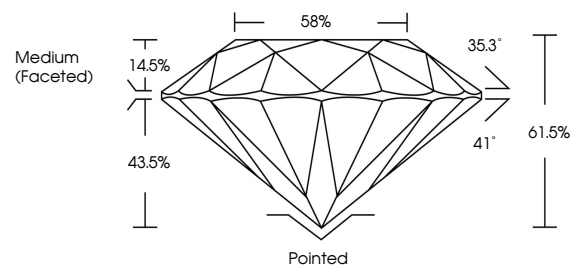
Symmetry **EXCELLENT**

Fluorescence **NONE**

Inscription(s) **LG747530931**

Comments: This Laboratory Grown Diamond was created by Chemical Vapor Deposition (CVD) growth process. Type IIa

PROPORTIONS



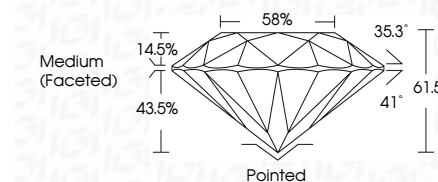
Sample Image Used

COLOR

D E F G H I J Faint Very Light Light

CLARITY

FL	IF	VS ¹⁻²	VS ¹⁻²	SI ¹⁻²	I ¹⁻³
Flawless	Internally Flawless	Very Very Slightly Included	Very Slightly Included	Slightly Included	Included



ADDITIONAL GRADING INFORMATION

Polish **EXCELLENT**

Symmetry **EXCELLENT**

Fluorescence **NONE**

Inscription(s) **LG747530931**

Comments: This Laboratory Grown Diamond was created by Chemical Vapor Deposition (CVD) growth process. Type IIa



IGI



December 9, 2025	IGI Report No LG747530931	2.04 CARATS	D	Pointed
8.12 - 8.15 X 5.01 MM	ROUND BRILLIANT	2.04 CARATS	D	EXCELLENT
Carat Weight		2.04 CARATS	D	EXCELLENT
Color Grade		VVS 2	IDEAL	NONE
Clarity Grade		VVS 2	IDEAL	NONE
Cut Grade		61.5%	61.5%	NONE
Depth		43.5%	43.5%	NONE
Table		14.5%	14.5%	NONE
Girdle		35.3°	35.3°	NONE
Culet		41°	41°	NONE
Polish		61.5%	61.5%	NONE
Symmetry		None	None	NONE
Fluorescence		None	None	NONE
Inscription(s)		None	None	NONE

Comments: This Laboratory Grown Diamond was created by Chemical Vapor Deposition (CVD) growth process. Type IIa