



ELECTRONIC COPY

LG747528239
Report verification at igi.org



November 26, 2025

IGI Report Number **LG747528239**

Description **LABORATORY GROWN DIAMOND**

Shape and Cutting Style **CUT CORNERED
RECTANGULAR MODIFIED
BRILLIANT**

Measurements **8.25 X 6.31 X 4.12 MM**

GRADING RESULTS

Carat Weight **2.10 CARATS**

Color Grade **FANCY YELLOW**

Clarity Grade **VVS 2**

LABORATORY GROWN DIAMOND REPORT

November 26, 2025

IGI Report Number **LG747528239**

Description **LABORATORY GROWN DIAMOND**

Shape and Cutting Style **CUT CORNERED RECTANGULAR
MODIFIED BRILLIANT**

Measurements **8.25 X 6.31 X 4.12 MM**

GRADING RESULTS

Carat Weight **2.10 CARATS**

Color Grade **FANCY YELLOW**

Clarity Grade **VVS 2**

ADDITIONAL GRADING INFORMATION

Polish **EXCELLENT**

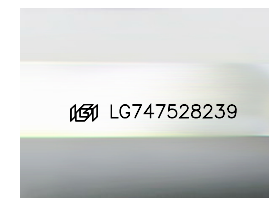
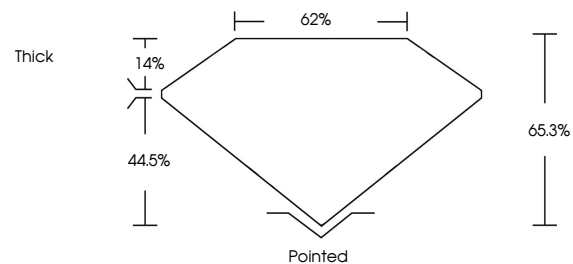
Symmetry **EXCELLENT**

Fluorescence **NONE**

Inscription(s) **IGI LG747528239**

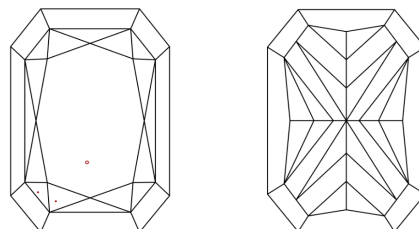
Comments: This Laboratory Grown Diamond was created by Chemical Vapor Deposition (CVD) growth process.

PROPORTIONS



Sample Image Used

CLARITY CHARACTERISTICS



KEY TO SYMBOLS

Red symbols indicate internal characteristics.
Green symbols indicate external characteristics.

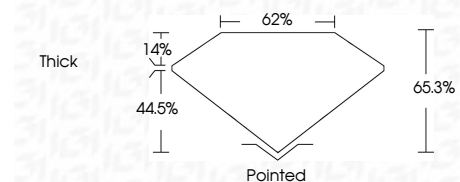
COLOR

D E F G H I J Faint Very Light Light

CLARITY

FL IF VVS¹⁻² VS¹⁻² SI¹⁻² I¹⁻³

Flawless Internally Flawless Very Very Slightly Included Very Slightly Included Slightly Included Included



ADDITIONAL GRADING INFORMATION

Polish **EXCELLENT**

Symmetry **EXCELLENT**

Fluorescence **NONE**

Inscription(s) **IGI LG747528239**

Comments: This Laboratory Grown Diamond was created by Chemical Vapor Deposition (CVD) growth process.



IGI



November 26, 2025
IGI Report No LG747528239
CUT CORNERED RECT. MODIFIED BRILLIANT

8.25 X 6.31 X 4.12 MM

2.10 CARATS
FANCY YELLOW

VVS 2

65.3% 62% Thick

Pointed
EXCELLENT
EXCELLENT
NONE
IGI LG747528239

Comments: This Laboratory Grown Diamond was created by Chemical Vapor Deposition (CVD) growth process.