



ELECTRONIC COPY

LG747528237
Report verification at igi.org

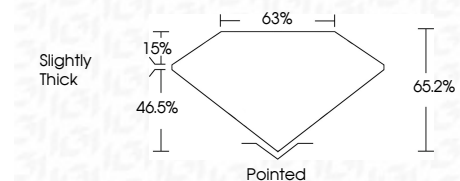


November 26, 2025
IGI Report Number **LG747528237**
Description **LABORATORY GROWN DIAMOND**
Shape and Cutting Style **CUT CORNERED
RECTANGULAR MODIFIED
BRILLIANT**

Measurements **8.43 X 6.26 X 4.08 MM**

GRADING RESULTS

Carat Weight **2.03 CARATS**
Color Grade **FANCY YELLOW**
Clarity Grade **VVS 2**



ADDITIONAL GRADING INFORMATION

Polish **EXCELLENT**
Symmetry **VERY GOOD**
Fluorescence **NONE**
Inscription(s) **IGI LG747528237**

Comments: This Laboratory Grown Diamond was created by Chemical Vapor Deposition (CVD) growth process.



November 26, 2025
IGI Report No LG747528237
CUT CORNERED RECT. MODIFIED BRILLIANT
8.43 X 6.26 X 4.08 MM
2.03 CARATS
FANCY YELLOW
VVS 2
65.2%
63%
Slightly Thick
Pointed
EXCELLENT
VERY GOOD
NONE
IGI LG747528237
Comments: This Laboratory Grown Diamond was created by Chemical Vapor Deposition (CVD) growth process.

LABORATORY GROWN DIAMOND REPORT

November 26, 2025
IGI Report Number **LG747528237**
Description **LABORATORY GROWN DIAMOND**
Shape and Cutting Style **CUT CORNERED RECTANGULAR
MODIFIED BRILLIANT**
Measurements **8.43 X 6.26 X 4.08 MM**

GRADING RESULTS

Carat Weight **2.03 CARATS**
Color Grade **FANCY YELLOW**
Clarity Grade **VVS 2**

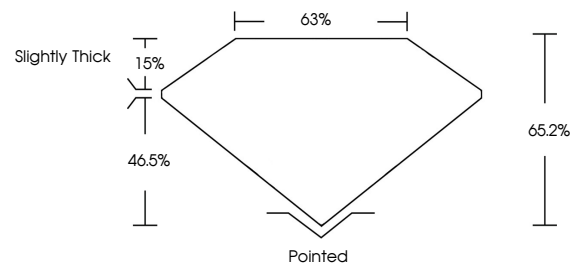
ADDITIONAL GRADING INFORMATION

Polish **EXCELLENT**
Symmetry **VERY GOOD**
Fluorescence **NONE**

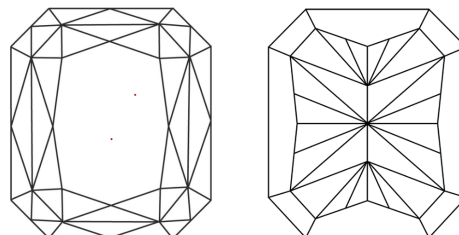
Inscription(s) **IGI LG747528237**

Comments: This Laboratory Grown Diamond was created by Chemical Vapor Deposition (CVD) growth process.

PROPORTIONS

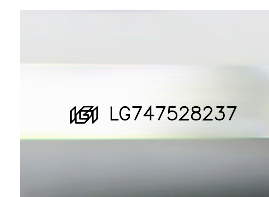


CLARITY CHARACTERISTICS



KEY TO SYMBOLS

Red symbols indicate internal characteristics.
Green symbols indicate external characteristics.



Sample Image Used

COLOR

D E F G H I J Faint Very Light Light

CLARITY

FL	IF	VVS ¹⁻²	VS ¹⁻²	SI ¹⁻²	I ¹⁻³
Flawless	Internally Flawless	Very Very Slightly Included	Very Slightly Included	Slightly Included	Included

