

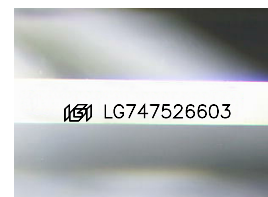
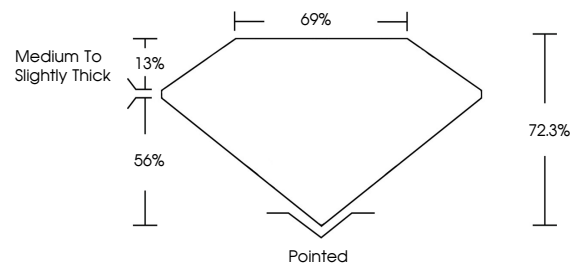


ELECTRONIC COPY

LABORATORY GROWN DIAMOND REPORT

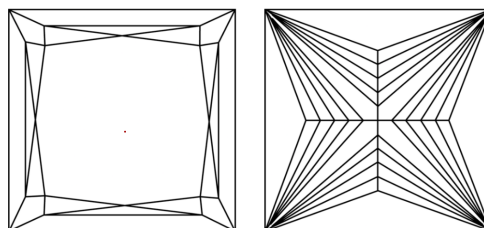
LG747526603
Report verification at igi.org

PROPORTIONS



Sample Image Used

CLARITY CHARACTERISTICS



KEY TO SYMBOLS

Red symbols indicate internal characteristics.
Green symbols indicate external characteristics.

COLOR

D E F G H I J Faint Very Light Light

CLARITY

FL	IF	VVS ¹⁻²	VS ¹⁻²	SI ¹⁻²	I ¹⁻³
Flawless	Internally Flawless	Very Very Slightly Included	Very Slightly Included	Slightly Included	Included

LABORATORY GROWN DIAMOND REPORT



November 21, 2025

IGI Report Number **LG747526603**

Description	LABORATORY GROWN DIAMOND
-------------	--------------------------

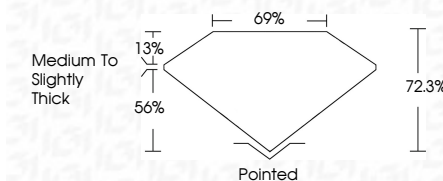
Shape and Cutting Style **PRINCESS CUT**

Measurements **5.49 X 5.38 X 3.89 MM**

GRADING RESULTS

Carat Weight 1.02 CARAT

Color Grade

Clarity Grade WS 1

ADDITIONAL GRADING INFORMATION

Polish **EXCELLENT**Symmetry **EXCELLENT**Fluorescence **NONE**Inscription(s) LG747526603

Comments: As Grown - No indication of post-growth treatment.

This Laboratory Grown Diamond was created by High Pressure High Temperature (HPHT) growth process.

Type II



November 21, 2026	1.02 CARAT	D	VVS 1	72.3%	6%	Medium to slightly thick	Polished	EXCELLENT	EXCELLENT	NONE	IGI LG74792603	<p>Comments: As shown, No indication of post-growth is evident. This Laboratory Grown Diamond was created by High Pressure High Temperature (HPHT) growth process. Type IIa</p>
GI Report No. LG74792603	Color Weight Color Grade	Clarity Grade	Depth	Table	Girdle		Polish	Symmetry	Fluorescence	Inscriptions(s)		

Comments:
As Grown - No Indication of post-growth treatment.
This Laboratory Grown Diamond was created by High Pressure High Temperature (HPHT) growth process.