



ELECTRONIC COPY

LG747526292
Report verification at igi.org



November 22, 2025
IGI Report Number **LG747526292**
Description **LABORATORY GROWN DIAMOND**
Shape and Cutting Style **SQUARE CUSHION MODIFIED BRILLIANT**
Measurements **6.74 X 6.55 X 4.27 MM**
GRADING RESULTS
Carat Weight **1.59 CARAT**
Color Grade **FANCY VIVID PINK**
Clarity Grade **VS 2**

November 22, 2025
IGI Report Number **LG747526292**
Description **LABORATORY GROWN DIAMOND**
Shape and Cutting Style **SQUARE CUSHION MODIFIED BRILLIANT**
Measurements **6.74 X 6.55 X 4.27 MM**

GRADING RESULTS

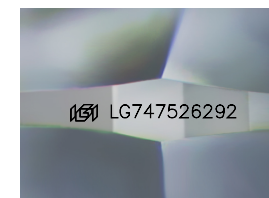
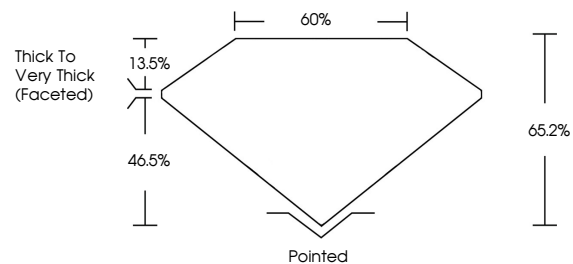
Carat Weight **1.59 CARAT**
Color Grade **FANCY VIVID PINK**
Clarity Grade **VS 2**

ADDITIONAL GRADING INFORMATION

Polish **EXCELLENT**
Symmetry **EXCELLENT**
Fluorescence **SLIGHT**
Inscription(s) **IGI LG747526292**

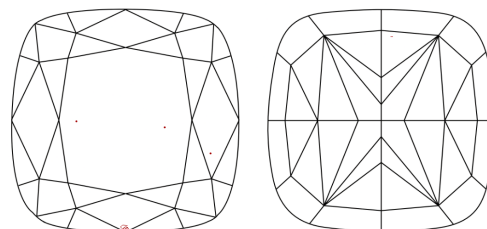
Comments: This Laboratory Grown Diamond was created by Chemical Vapor Deposition (CVD) growth process. Indications of post-growth treatment.

PROPORTIONS



Sample Image Used

CLARITY CHARACTERISTICS



KEY TO SYMBOLS

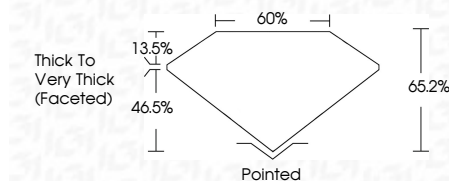
Red symbols indicate internal characteristics.
Green symbols indicate external characteristics.

COLOR

D E F G H I J Faint Very Light Light

CLARITY

FL	IF	VS ¹⁻²	VS ¹⁻²	SI ¹⁻²	I ¹⁻³
Flawless	Internally Flawless	Very Very Slightly Included	Very Slightly Included	Slightly Included	Included



ADDITIONAL GRADING INFORMATION

Polish **EXCELLENT**
Symmetry **EXCELLENT**
Fluorescence **SLIGHT**
Inscription(s) **IGI LG747526292**
Comments: This Laboratory Grown Diamond was created by Chemical Vapor Deposition (CVD) growth process. Indications of post-growth treatment.



November 22, 2025
IGI Report No **LG747526292**
SQUARE CUSHION MODIFIED BRILLIANT
6.74 X 6.55 X 4.27 MM
Carat Weight **1.59 CARAT**
Color Grade **FANCY VIVID PINK**
Clarity Grade **VS 2**
Depth **65.2%**
Table **60%**
Girdle **Thick to Very Thick (Faceted)**
Culet **Pointed**
Polish **EXCELLENT**
Symmetry **EXCELLENT**
Fluorescence **SLIGHT**
Inscription(s) **IGI LG747526292**
Comments: This Laboratory Grown Diamond was created by Chemical Vapor Deposition (CVD) growth process. Indications of post-growth treatment.