



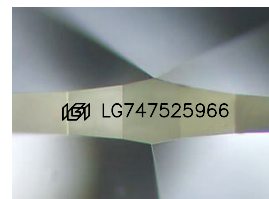
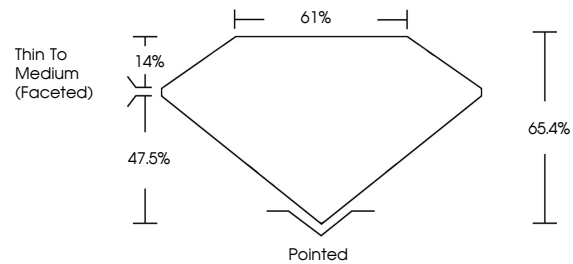
**INTERNATIONAL
GEMOLOGICAL
INSTITUTE**

ELECTRONIC COPY

LABORATORY GROWN DIAMOND REPORT

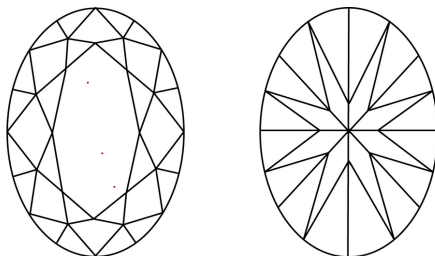
LG747525966
Report verification at igi.org

PROPORTIONS



Sample Image Used

CLARITY CHARACTERISTICS



KEY TO SYMBOLS

Red symbols indicate internal characteristics.
Green symbols indicate external characteristics.

COLOR

D E F G H I J Faint Very Light Light

CLARITY

FL	IF	VVS ¹⁻²	VS ¹⁻²	SI ¹⁻²	I ¹⁻³
Flawless	Internally Flawless	Very Very Slightly Included	Very Slightly Included	Slightly Included	Included

LABORATORY GROWN DIAMOND REPORT



November 21, 2025

IGI Report Number **LG747525966**

Description	LABORATORY GROWN DIAMOND
-------------	--------------------------

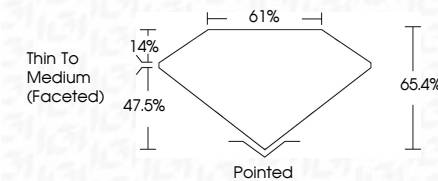
Shape and Cutting Style **OVAL BRILLIANT**

Measurements **8.13 X 5.66 X 3.70 MM**

GRADING RESULTS

Carat Weight 1.05 CARAT

Color Grade **D**

Clarity Grade VVS 2

ADDITIONAL GRADING INFORMATION

Polish	VERY GOOD
--------	-----------

Symmetry GOODFluorescence **NONE**Inscription(s)  LG747525966

Comments: This Laboratory Grown Diamond was created by Chemical Vapor Deposition (CVD) growth process.
Type IIa



IG



© IGI 2020, International Gemological Institute

FD - 10 20

www.igi.org

THIS DOCUMENT WAS PRODUCED WITH THE FOLLOWING SECURITY MEASURES: SPECIAL DOCUMENT PAPER, INK SCREENS, WATERMARK, BACKGROUND DESIGNS, HOLOGRAM AND OTHER SECURITY FEATURES NOT LISTED AND DO EXCEED DOCUMENT SECURITY INDUSTRY GUIDELINES

November 21, 2025
 IIGI Report No LG747525966

100% NATURAL DIAMOND	1.05 CARAT
Color Grade	D
Clarity Grade	VVS 2
Depth	65.4%
Table	61%
Girdle	Thin To Medium (graded)
Culet	Pointed
Polish	VERY GOOD
Symmetry	GOOD
Fluorescence	NONE
Measurements (mm)	6.13 x 5.66 x 3.70

Comments:
This Laboratory Grown Diamond was created by Chemical Vapor Deposition (CVD) growth process.