



**ELECTRONIC COPY**

LG747525716  
Report verification at igi.org



November 22, 2025  
IGI Report Number **LG747525716**  
Description **LABORATORY GROWN DIAMOND**  
Shape and Cutting Style **SQUARE EMERALD CUT**  
Measurements **7.42 X 7.34 X 5.09 MM**  
**GRADING RESULTS**  
Carat Weight **2.83 CARATS**  
Color Grade **D**  
Clarity Grade **VVS 1**

**LABORATORY GROWN DIAMOND REPORT**

November 22, 2025  
IGI Report Number **LG747525716**  
Description **LABORATORY GROWN DIAMOND**  
Shape and Cutting Style **SQUARE EMERALD CUT**  
Measurements **7.42 X 7.34 X 5.09 MM**

**GRADING RESULTS**

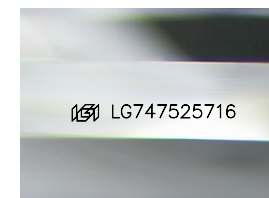
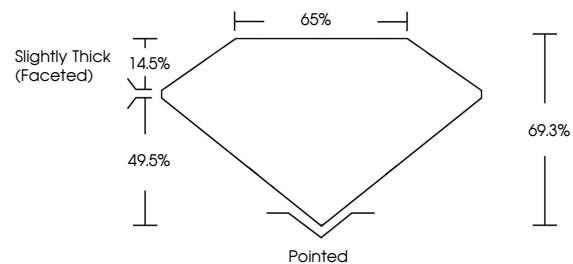
Carat Weight **2.83 CARATS**  
Color Grade **D**  
Clarity Grade **VVS 1**

**ADDITIONAL GRADING INFORMATION**

Polish **EXCELLENT**  
Symmetry **EXCELLENT**  
Fluorescence **NONE**  
Inscription(s) **IGI LG747525716**

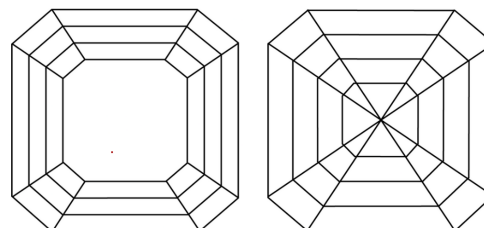
Comments: This Laboratory Grown Diamond was created by Chemical Vapor Deposition (CVD) growth process. Type IIa

**PROPORTIONS**



Sample Image Used

**CLARITY CHARACTERISTICS**



**KEY TO SYMBOLS**

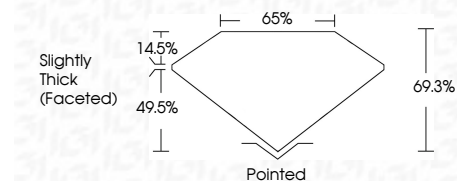
Red symbols indicate internal characteristics.  
Green symbols indicate external characteristics.

**COLOR**

D E F G H I J Faint Very Light Light

**CLARITY**

| FL       | IF                  | VVS <sup>1-2</sup>          | VS <sup>1-2</sup>      | SI <sup>1-2</sup> | I <sup>1-3</sup> |
|----------|---------------------|-----------------------------|------------------------|-------------------|------------------|
| Flawless | Internally Flawless | Very Very Slightly Included | Very Slightly Included | Slightly Included | Included         |



**ADDITIONAL GRADING INFORMATION**

Polish **EXCELLENT**  
Symmetry **EXCELLENT**  
Fluorescence **NONE**  
Inscription(s) **IGI LG747525716**  
Comments: This Laboratory Grown Diamond was created by Chemical Vapor Deposition (CVD) growth process. Type IIa



November 22, 2025  
IGI Report No **LG747525716**  
**SQUARE EMERALD CUT**  
Carat Weight **2.83 CARATS**  
Color Grade **D**  
Clarity Grade **VVS 1**  
Depth **69.3%**  
Table **65%**  
Girdle **Slightly Thick (Faceted)**  
Culet **Pointed**  
Polish **EXCELLENT**  
Symmetry **EXCELLENT**  
Fluorescence **NONE**  
Inscription(s) **IGI LG747525716**  
Comments: This Laboratory Grown Diamond was created by Chemical Vapor Deposition (CVD) growth process. Type IIa