



ELECTRONIC COPY

LG747523590
Report verification at igi.org



November 21, 2025
IGI Report Number **LG747523590**
Description **LABORATORY GROWN DIAMOND**
Shape and Cutting Style **CUSHION MIXED CUT**
Measurements **16.47 X 10.33 X 6.02 MM**
GRADING RESULTS
Carat Weight **10.08 CARATS**
Color Grade **FANCY INTENSE PINK**
Clarity Grade **VS 2**

LABORATORY GROWN DIAMOND REPORT

November 21, 2025
IGI Report Number **LG747523590**
Description **LABORATORY GROWN DIAMOND**
Shape and Cutting Style **CUSHION MIXED CUT**
Measurements **16.47 X 10.33 X 6.02 MM**

GRADING RESULTS

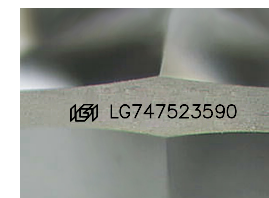
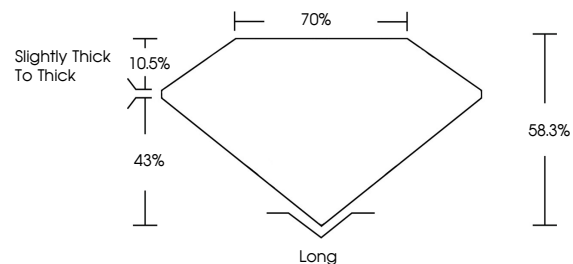
Carat Weight **10.08 CARATS**
Color Grade **FANCY INTENSE PINK**
Clarity Grade **VS 2**

ADDITIONAL GRADING INFORMATION

Polish **EXCELLENT**
Symmetry **EXCELLENT**
Fluorescence **SLIGHT**
Inscription(s) **IGI LG747523590**

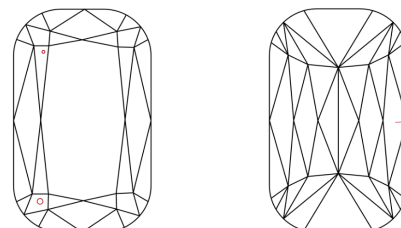
Comments: This Laboratory Grown Diamond was created by Chemical Vapor Deposition (CVD) growth process.
Indications of post-growth treatment.

PROPORTIONS



Sample Image Used

CLARITY CHARACTERISTICS



KEY TO SYMBOLS

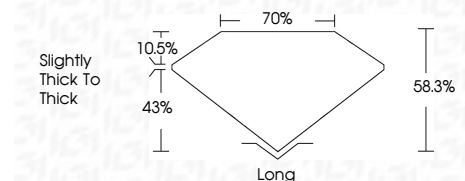
Red symbols indicate internal characteristics.
Green symbols indicate external characteristics.

COLOR

D E F G H I J Faint Very Light Light

CLARITY

FL	IF	VS ¹⁻²	VS ¹⁻²	SI ¹⁻²	I ¹⁻³
Flawless	Internally Flawless	Very Very Slightly Included	Very Slightly Included	Slightly Included	Included



ADDITIONAL GRADING INFORMATION

Polish **EXCELLENT**
Symmetry **EXCELLENT**
Fluorescence **SLIGHT**
Inscription(s) **IGI LG747523590**
Comments: This Laboratory Grown Diamond was created by Chemical Vapor Deposition (CVD) growth process.
Indications of post-growth treatment.



November 21, 2025
IGI Report No LG747523590
CUSHION MIXED CUT
10.08 CARATS
Carat Weight
Color Grade **FANCY INTENSE PINK**
Clarity Grade **VS 2**
Depth **58.3%**
Table **10.5%**
Girdle **Slightly thick to thick**
Culet **Long**
Polish **EXCELLENT**
Symmetry **EXCELLENT**
Fluorescence **SLIGHT**
Inscription(s) **IGI LG747523590**
Comments: This Laboratory Grown Diamond was created by Chemical Vapor Deposition (CVD) growth process.
Indications of post-growth treatment.