



**ELECTRONIC COPY**

LG747522835  
Report verification at igi.org



November 18, 2025

IGI Report Number **LG747522835**

Description **LABORATORY GROWN DIAMOND**

Shape and Cutting Style **ROUND BRILLIANT**

Measurements **11.68 - 11.71 X 6.96 MM**

**GRADING RESULTS**

Carat Weight **6.01 CARATS**

Color Grade **F**

Clarity Grade **VS 1**

Cut Grade **GOOD**

November 18, 2025  
IGI Report Number **LG747522835**  
Description **LABORATORY GROWN DIAMOND**  
Shape and Cutting Style **ROUND BRILLIANT**  
Measurements **11.68 - 11.71 X 6.96 MM**

**GRADING RESULTS**

Carat Weight **6.01 CARATS**

Color Grade **F**

Clarity Grade **VS 1**

Cut Grade **GOOD**

**ADDITIONAL GRADING INFORMATION**

Polish **EXCELLENT**

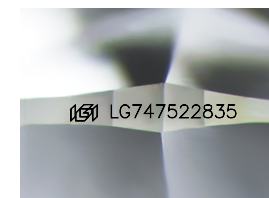
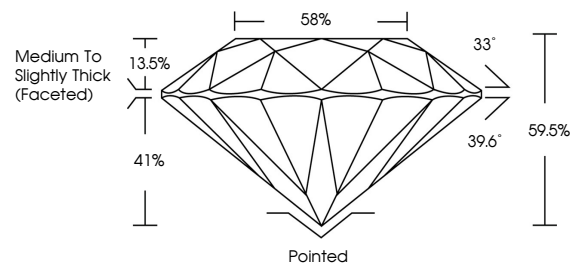
Symmetry **EXCELLENT**

Fluorescence **NONE**

Inscription(s) **IGI LG747522835**

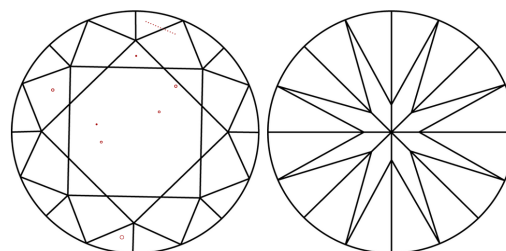
Comments: This Laboratory Grown Diamond was created by Chemical Vapor Deposition (CVD) growth process.  
Type IIa

**PROPORTIONS**



Sample Image Used

**CLARITY CHARACTERISTICS**



**KEY TO SYMBOLS**

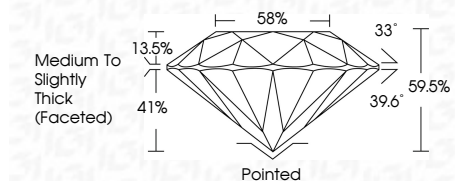
Red symbols indicate internal characteristics.  
Green symbols indicate external characteristics.

**COLOR**

D E F G H I J Faint Very Light Light

**CLARITY**

FL	IF	VS <sup>1-2</sup>	VS <sup>1-2</sup>	SI <sup>1-2</sup>	I <sup>1-3</sup>
Flawless	Internally Flawless	Very Very Slightly Included	Very Slightly Included	Slightly Included	Included



**ADDITIONAL GRADING INFORMATION**

Polish **EXCELLENT**

Symmetry **EXCELLENT**

Fluorescence **NONE**

Inscription(s) **IGI LG747522835**

Comments: This Laboratory Grown Diamond was created by Chemical Vapor Deposition (CVD) growth process.  
Type IIa



**IGI**



November 18, 2025  
IGI Report No LG747522835  
ROUND BRILLIANT  
11.68 - 11.71 X 6.96 MM  
6.01 CARATS  
F  
VS 1  
GOOD  
59.5%  
58%  
Medium To Slightly Thick (Faceted)  
Pointed  
EXCELLENT  
EXCELLENT  
NONE  
NONE  
IGI LG747522835  
Comments: This Laboratory Grown Diamond was created by Chemical Vapor Deposition (CVD) growth process.  
Type IIa