



ELECTRONIC COPY

LG747518608
Report verification at igi.org



November 5, 2025

IGI Report Number **LG747518608**

Description **LABORATORY GROWN DIAMOND**

Shape and Cutting Style **ROUND BRILLIANT**

Measurements **9.19 - 9.24 X 5.63 MM**

GRADING RESULTS

Carat Weight **2.97 CARATS**

Color Grade **E**

Clarity Grade **VVS 2**

Cut Grade **IDEAL**

November 5, 2025
IGI Report Number **LG747518608**
Description **LABORATORY GROWN DIAMOND**
Shape and Cutting Style **ROUND BRILLIANT**
Measurements **9.19 - 9.24 X 5.63 MM**

GRADING RESULTS

Carat Weight **2.97 CARATS**

Color Grade **E**

Clarity Grade **VVS 2**

Cut Grade **IDEAL**

ADDITIONAL GRADING INFORMATION

Polish **EXCELLENT**

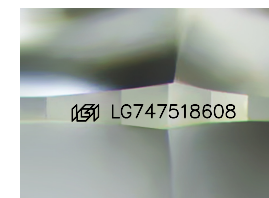
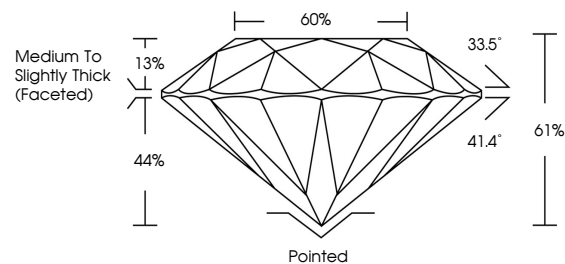
Symmetry **EXCELLENT**

Fluorescence **NONE**

Inscription(s) **IGI LG747518608**

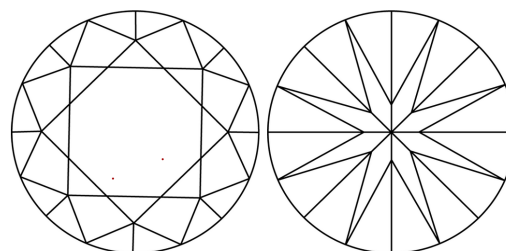
Comments: This Laboratory Grown Diamond was created by Chemical Vapor Deposition (CVD) growth process.
Type IIa

PROPORTIONS



Sample Image Used

CLARITY CHARACTERISTICS



KEY TO SYMBOLS

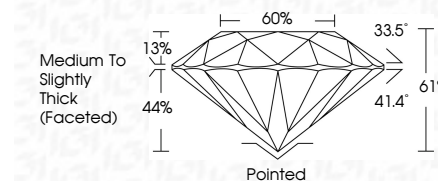
Red symbols indicate internal characteristics.
Green symbols indicate external characteristics.

COLOR

D E F G H I J Faint Very Light Light

CLARITY

| FL | IF | VVS ¹⁻² | VS ¹⁻² | SI ¹⁻² | I ¹⁻³ |
|----------|---------------------|-----------------------------|------------------------|-------------------|------------------|
| Flawless | Internally Flawless | Very Very Slightly Included | Very Slightly Included | Slightly Included | Included |



ADDITIONAL GRADING INFORMATION

Polish **EXCELLENT**

Symmetry **EXCELLENT**

Fluorescence **NONE**

Inscription(s) **IGI LG747518608**

Comments: This Laboratory Grown Diamond was created by Chemical Vapor Deposition (CVD) growth process.
Type IIa



IGI



| | | | | | | | | | | | | | | | |
|------------------|---------------------------|-----------------|-----------------------|-------------|-----|-------|-------|-----|-----|------------------------------------|---------|-----------|-----------|------|-----------------|
| November 5, 2025 | IGI Report No LG747518608 | ROUND BRILLIANT | 9.19 - 9.24 X 5.63 MM | 2.97 CARATS | E | VVS 2 | IDEAL | 61% | 66% | Medium To Slightly Thick (Faceted) | Pointed | EXCELLENT | EXCELLENT | NONE | IGI LG747518608 |
| IGI | IGI | IGI | IGI | IGI | IGI | IGI | IGI | IGI | IGI | IGI | IGI | IGI | IGI | IGI | IGI |

Comments: This Laboratory Grown Diamond was created by Chemical Vapor Deposition (CVD) growth process.
Type IIa