



**ELECTRONIC COPY**

LG747515786  
Report verification at igi.org



December 16, 2025  
IGI Report Number **LG747515786**  
Description **LABORATORY GROWN DIAMOND**  
Shape and Cutting Style **ROUND BRILLIANT**  
Measurements **7.25 - 7.29 X 4.64 MM**  
**GRADING RESULTS**  
Carat Weight **1.54 CARAT**  
Color Grade **LIGHT YELLOW**  
Clarity Grade **VS 2**  
Cut Grade **VERY GOOD**

December 16, 2025  
IGI Report Number **LG747515786**  
Description **LABORATORY GROWN DIAMOND**  
Shape and Cutting Style **ROUND BRILLIANT**  
Measurements **7.25 - 7.29 X 4.64 MM**

**GRADING RESULTS**

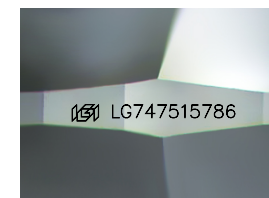
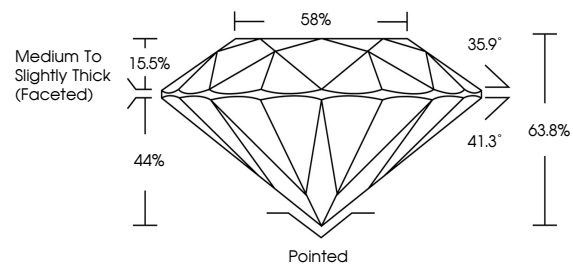
Carat Weight **1.54 CARAT**  
Color Grade **LIGHT YELLOW**  
Clarity Grade **VS 2**  
Cut Grade **VERY GOOD**

**ADDITIONAL GRADING INFORMATION**

Polish **VERY GOOD**  
Symmetry **VERY GOOD**  
Fluorescence **NONE**  
Inscription(s) **IGI LG747515786**

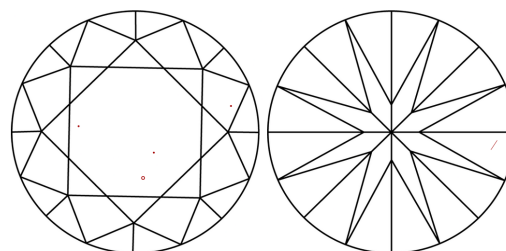
Comments: This Laboratory Grown Diamond was created by Chemical Vapor Deposition (CVD) growth process.

**PROPORTIONS**



Sample Image Used

**CLARITY CHARACTERISTICS**



**KEY TO SYMBOLS**

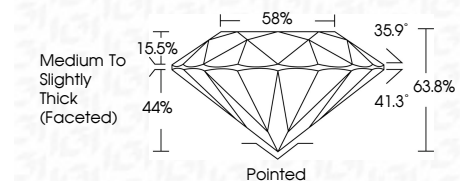
Red symbols indicate internal characteristics.  
Green symbols indicate external characteristics.

**COLOR**

D E F G H I J Faint Very Light Light

**CLARITY**

FL	IF	VS <sup>1-2</sup>	VS <sup>1-2</sup>	SI <sup>1-2</sup>	I <sup>1-3</sup>
Flawless	Internally Flawless	Very Very Slightly Included	Very Slightly Included	Slightly Included	Included



**ADDITIONAL GRADING INFORMATION**

Polish **VERY GOOD**  
Symmetry **VERY GOOD**  
Fluorescence **NONE**  
Inscription(s) **IGI LG747515786**  
Comments: This Laboratory Grown Diamond was created by Chemical Vapor Deposition (CVD) growth process.



December 16, 2025  
IGI Report No LG747515786  
**ROUND BRILLIANT**  
1.54 CARAT  
**LIGHT YELLOW**  
Color Grade  
VS 2  
**VERY GOOD**  
Clarity Grade  
63.8%  
88%  
Medium To Slightly Thick (Faceted)  
Pointed  
Polish **VERY GOOD**  
Symmetry **VERY GOOD**  
Fluorescence **NONE**  
Inscription(s) **IGI LG747515786**  
Comments: This Laboratory Grown Diamond was created by Chemical Vapor Deposition (CVD) growth process.