



**ELECTRONIC COPY**

LG747515760  
Report verification at [igi.org](http://igi.org)



December 16, 2025  
IGI Report Number **LG747515760**  
Description **LABORATORY GROWN DIAMOND**  
Shape and Cutting Style **EMERALD CUT**  
Measurements **7.11 X 5.07 X 3.12 MM**  
**GRADING RESULTS**  
Carat Weight **1.10 CARAT**  
Color Grade **FANCY YELLOW**  
Clarity Grade **VVS 2**

December 16, 2025  
IGI Report Number **LG747515760**  
Description **LABORATORY GROWN DIAMOND**  
Shape and Cutting Style **EMERALD CUT**  
Measurements **7.11 X 5.07 X 3.12 MM**

**GRADING RESULTS**

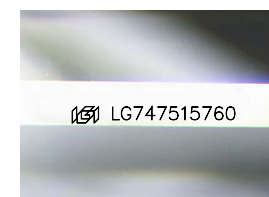
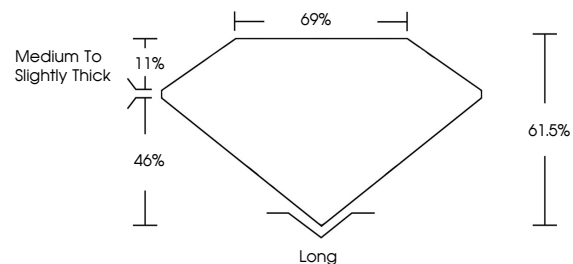
Carat Weight **1.10 CARAT**  
Color Grade **FANCY YELLOW**  
Clarity Grade **VVS 2**

**ADDITIONAL GRADING INFORMATION**

Polish **VERY GOOD**  
Symmetry **VERY GOOD**  
Fluorescence **NONE**  
Inscription(s) **IGI LG747515760**

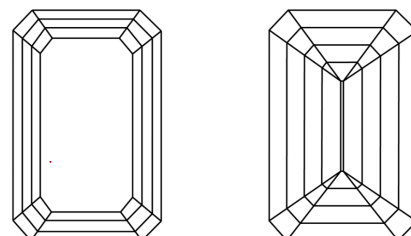
Comments: This Laboratory Grown Diamond was created by Chemical Vapor Deposition (CVD) growth process.

**PROPORTIONS**



Sample Image Used

**CLARITY CHARACTERISTICS**



**KEY TO SYMBOLS**

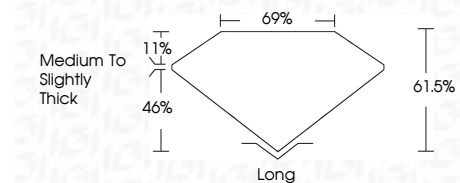
Red symbols indicate internal characteristics.  
Green symbols indicate external characteristics.

**COLOR**

D E F G H I J Faint Very Light Light

**CLARITY**

FL	IF	VVS <sup>1-2</sup>	VS <sup>1-2</sup>	SI <sup>1-2</sup>	I <sup>1-3</sup>
Flawless	Internally Flawless	Very Very Slightly Included	Very Slightly Included	Slightly Included	Included



**ADDITIONAL GRADING INFORMATION**

Polish **VERY GOOD**  
Symmetry **VERY GOOD**  
Fluorescence **NONE**  
Inscription(s) **IGI LG747515760**  
Comments: This Laboratory Grown Diamond was created by Chemical Vapor Deposition (CVD) growth process.



**IGI**



December 16, 2025  
IGI Report No **LG747515760**  
**EMERALD CUT**  
**1.10 CARAT**  
Carat Weight  
**FANCY YELLOW**  
Color Grade  
**VVS 2**  
Clarity Grade  
**61.6%**  
Table  
**6%**  
Girdle  
**Medium to Slightly Thick**  
Culet  
**Long**  
Polish  
**VERY GOOD**  
Symmetry  
**VERY GOOD**  
Fluorescence  
**NONE**  
Inscription(s)  
**IGI LG747515760**  
Comments: This Laboratory Grown Diamond was created by Chemical Vapor Deposition (CVD) growth process.