

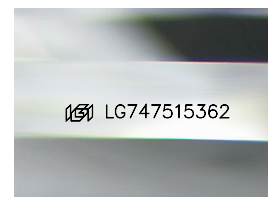
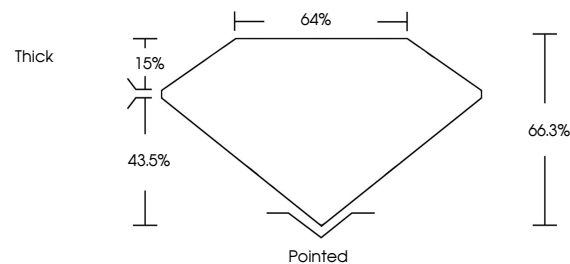


ELECTRONIC COPY

LABORATORY GROWN DIAMOND REPORT

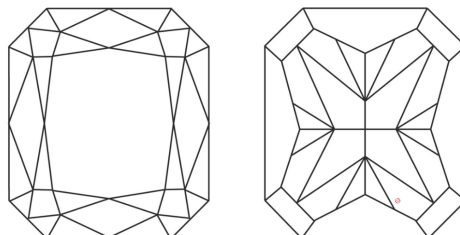
LG747515362
Report verification at lgi.org

PROPORTIONS



Sample Image Used

CLARITY CHARACTERISTICS



KEY TO SYMBOLS

Red symbols indicate internal characteristics.
Green symbols indicate external characteristics.

COLOR

D E F G H I J Faint Very Light Light

CLARITY

FL	IF	VVS ¹⁻²	VS ¹⁻²	SI ¹⁻²	I ¹⁻³
Flawless	Internally Flawless	Very Very Slightly Included	Very Slightly Included	Slightly Included	Included

LABORATORY GROWN DIAMOND REPORT



December 26, 2025

IGI Report Number **LG747515362**Description **LABORATORY GROWN DIAMOND**

Shape and Cutting Style

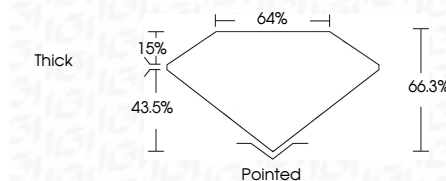
Measurements 6.56 X 4.87 X 3.23 MM

GRADING RESULTS

Carat Weight 1.00 CARAT

Color Grade **FANCY PINK**

Clarity Grade VS 1



ADDITIONAL GRADING INFORMATION

Polish **EXCELLENT**Symmetry **EXCELLENT**

Fluorescence SLIGHT

Inscription(s) **151** LG747515362

Comments: This Laboratory Grown Diamond was created by High Pressure High Temperature (HPHT) growth process.

Indications of post-growth treatment.



© IGI 2020, International Gemological Institute

FD - 10 20

www.igi.org

THIS DOCUMENT WAS PRODUCED WITH THE FOLLOWING SECURITY MEASURES: SPECIAL DOCUMENT PAPER, INK SCREENS, WATERMARK, BACKGROUND DESIGNS, HOLOGRAM AND OTHER SECURITY FEATURES NOT LISTED AND DO EXCEED DOCUMENT SECURITY INDUSTRY GUIDELINE

	December 26, 2025
	GJ REPORT NO L974761S3K2
	CUT CORNERED RECT. MODIFIED BRILLIANT
	5.65 X 4.87 X 3.23 MM
Color Grade	Fancy Pink
Clarity Grade	Vs1
Depth	66.5%
Tabelle	6.6%
Grade	Thick
Culet	Poished
Polish	Excellent
Symmetry	Excellent
Fluorescence	Slight
	Laser/Labmarkings
	Serial#LZ74761S3K2

Comments:
This Laboratory Grown Diamond was created by High Pressure High temperature (HPHT) growth process.