



ELECTRONIC COPY

LG747514970
Report verification at igi.org



December 4, 2025
IGI Report Number **LG747514970**
Description **LABORATORY GROWN DIAMOND**
Shape and Cutting Style **SQUARE CUSHION MODIFIED BRILLIANT**
Measurements **6.00 X 5.95 X 3.38 MM**
GRADING RESULTS
Carat Weight **1.06 CARAT**
Color Grade **FANCY LIGHT YELLOWISH BROWN**
Clarity Grade **VS 1**

LABORATORY GROWN DIAMOND REPORT

December 4, 2025
IGI Report Number **LG747514970**
Description **LABORATORY GROWN DIAMOND**
Shape and Cutting Style **SQUARE CUSHION MODIFIED BRILLIANT**
Measurements **6.00 X 5.95 X 3.38 MM**

GRADING RESULTS

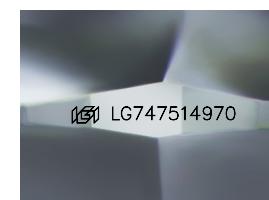
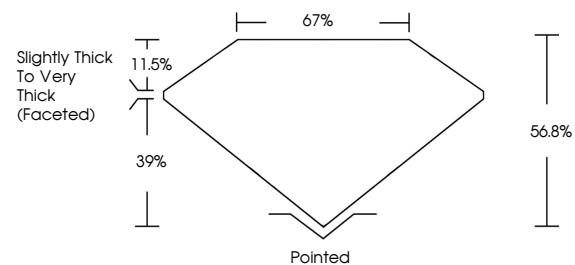
Carat Weight **1.06 CARAT**
Color Grade **FANCY LIGHT YELLOWISH BROWN**
Clarity Grade **VS 1**

ADDITIONAL GRADING INFORMATION

Polish **VERY GOOD**
Symmetry **VERY GOOD**
Fluorescence **NONE**
Inscription(s) **IGI LG747514970**

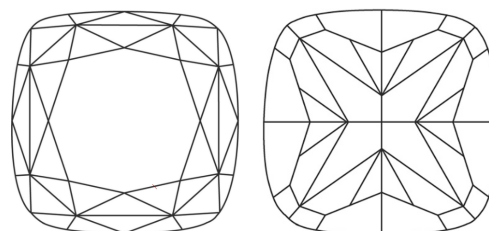
Comments: This Laboratory Grown Diamond was created by Chemical Vapor Deposition (CVD) growth process.

PROPORTIONS



Sample Image Used

CLARITY CHARACTERISTICS



KEY TO SYMBOLS

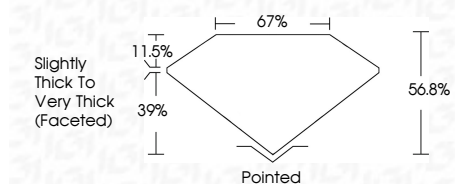
Red symbols indicate internal characteristics.
Green symbols indicate external characteristics.

COLOR

D E F G H I J Faint Very Light Light

CLARITY

FL	IF	VS ¹⁻²	VS ¹⁻²	SI ¹⁻²	I ¹⁻³
Flawless	Internally Flawless	Very Very Slightly Included	Very Slightly Included	Slightly Included	Included



ADDITIONAL GRADING INFORMATION

Polish **VERY GOOD**
Symmetry **VERY GOOD**
Fluorescence **NONE**
Inscription(s) **IGI LG747514970**
Comments: This Laboratory Grown Diamond was created by Chemical Vapor Deposition (CVD) growth process.



IGI



December 4, 2025
IGI Report No **LG747514970**
SQUARE CUSHION MODIFIED BRILLIANT
6.00 X 5.95 X 3.38 MM
Carat Weight **1.06 CARAT**
Color Grade **FANCY LIGHT YELLOWISH BROWN**
Clarity Grade **VS 1**
Table **66.6%**
Depth **67%**
Girdle **Slightly Thick To Very Thick (Faceted)**
Culet **Pointed**
Polish **VERY GOOD**
Symmetry **VERY GOOD**
Fluorescence **NONE**
Inscription(s) **IGI LG747514970**
Comments: This Laboratory Grown Diamond was created by Chemical Vapor Deposition (CVD) growth process.