



**ELECTRONIC COPY**

## LABORATORY GROWN DIAMOND REPORT

November 19, 2025	
IGI Report Number	LG747513972
Description	LABORATORY GROWN DIAMOND
Shape and Cutting Style	ROUND MODIFIED BRILLIANT
Measurements	8.57 - 8.56 X 5.15 MM

## GRADING RESULTS

Carat Weight	2.51 CARATS
Color Grade	F
Clarity Grade	VS 1

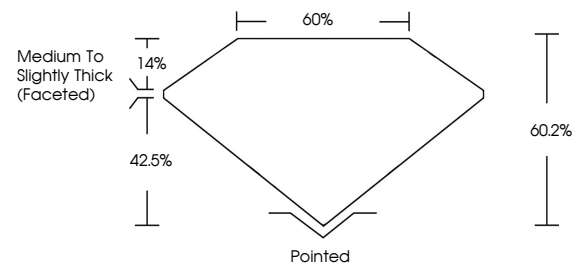
### ADDITIONAL GRADING INFORMATION

Polish	EXCELLENT
Symmetry	EXCELLENT
Fluorescence	NONE
Inscription(s)	 LG747513972

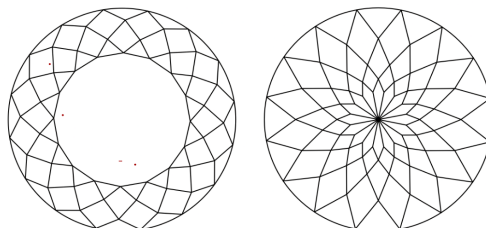
Comments: This Laboratory Grown Diamond was created by Chemical Vapor Deposition (CVD) growth process.  
Type IIa

LG747513972  
Report verification at [igi.org](http://igi.org)

## PROPORTIONS

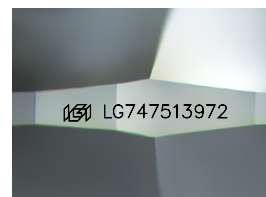


## CLARITY CHARACTERISTICS



## KEY TO SYMBOLS

Red symbols indicate internal characteristics.  
Green symbols indicate external characteristics.



Sample Image Used

## COLOR

D E F G H I J Faint Very Light Light

## CLARITY

FL	IF	VVS <sup>1-2</sup>	VS <sup>1-2</sup>	SI <sup>1-2</sup>	I <sup>1-3</sup>
Flawless	Internally Flawless	Very Very Slightly Included	Very Slightly Included	Slightly Included	Included

## LABORATORY GROWN DIAMOND REPORT




November 19, 2025	
IGI Report Number	LG747513972
Description	LABORATORY GROWN DIAMOND
Shape and Cutting Style	ROUND MODIFIED BRILLIANT
Measurements	8.57 - 8.56 X 5.15 MM

## GRADING RESULTS

Carat Weight	2.51 CARATS
Color Grade	F
Clarity Grade	VS 1

### ADDITIONAL GRADING INFORMATION

Polish	EXCELLENT
Symmetry	EXCELLENT
Fluorescence	NONE
Inscription(s)	 LG747513972
<p>Comments: This Laboratory Grown Diamond was created by Chemical Vapor Deposition (CVD) growth process.</p> <p>Type IIa</p>	



© IGI 2020, International Gemological Institute

FD - 10 20

**www.igi.org**

THIS DOCUMENT WAS PRODUCED WITH THE FOLLOWING SECURITY MEASURES: SPECIAL DOCUMENT PAPER, INK SCREENS, WATERMARK, BACKGROUND DESIGNS, HOLOGRAM AND OTHER SECURITY FEATURES NOT LISTED AND DO EXCEED DOCUMENT SECURITY INDUSTRY GUIDELINES

November 19, 2025  
 CGI Report No LG747513972  
 FOUND MODIFIED BRILLIANT

3.57 - 8.66 X 5.16 MM	Carat Weight	2.51 CARATS
	Color Grade	F
	Clarity Grade	VS 1
	Depth	60.2%
	Table	60%
	Grade	Medium To Slightly Thick (rounded)
	Culet	Pointed
	Polish	EXCELLENT
	Symmetry	EXCELLENT
	Fluorescence	NONE
	Report Number	4441127 (7/15/19) 100%

**Comments:**  
This Laboratory Grown Diamond was  
created by Chemical Vapor Deposition  
(CVD) growth process.