



**November 26, 2025**

**IGI Report Number LG747513542**

**ROUND BRILLIANT  
LABORATORY GROWN DIAMOND  
5.76 - 5.78 X 3.51 MM**

**0.72 CARAT  
D  
VS 2  
IDEAL  
EXCELLENT  
EXCELLENT  
NONE  
IGI LG747513542**

Comments: As Grown - No indication of post-growth treatment. This Laboratory Grown Diamond was created by High Pressure High Temperature (HPHT) growth process. Type II

**LABORATORY GROWN DIAMOND REPORT**

November 26, 2025  
IGI Report Number **LG747513542**  
Description **LABORATORY GROWN DIAMOND**  
Shape and Cutting Style **ROUND BRILLIANT**  
Measurements **5.76 - 5.78 X 3.51 MM**

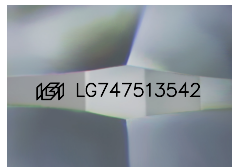
**GRADING RESULTS**

Carat Weight **0.72 CARAT**  
Color Grade **D**  
Clarity Grade **VS 2**  
Cut Grade **IDEAL**

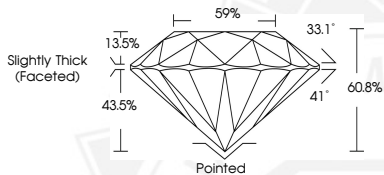
**ADDITIONAL GRADING INFORMATION**

Polish **EXCELLENT**  
Symmetry **EXCELLENT**  
Fluorescence **NONE**  
Inscription(s) **IGI LG747513542**

Comments: As Grown - No indication of post-growth treatment. This Laboratory Grown Diamond was created by High Pressure High Temperature (HPHT) growth process. Type II



Sample Image Used



**November 26, 2025**

**IGI Report Number LG747513542**

**ROUND BRILLIANT  
LABORATORY GROWN DIAMOND  
5.76 - 5.78 X 3.51 MM**

**0.72 CARAT  
D  
VS 2  
IDEAL  
EXCELLENT  
EXCELLENT  
NONE  
IGI LG747513542**

Comments: As Grown - No indication of post-growth treatment. This Laboratory Grown Diamond was created by High Pressure High Temperature (HPHT) growth process. Type II

THIS DOCUMENT WAS PRODUCED WITH THE FOLLOWING SECURITY MEASURES: SPECIAL DOCUMENT PAPER, INK SCREENS, WATERMARK, BACKGROUND DESIGNS, HOLOGRAM AND OTHER SECURITY FEATURES NOT LISTED AND DO EXCEED DOCUMENT SECURITY INDUSTRY GUIDELINES.