



**ELECTRONIC COPY**

LG747513184  
Report verification at igi.org



November 24, 2025  
IGI Report Number **LG747513184**  
Description **LABORATORY GROWN DIAMOND**  
Shape and Cutting Style **SQUARE CUSHION BRILLIANT**  
Measurements **7.04 X 6.73 X 4.43 MM**

**GRADING RESULTS**

Carat Weight **1.51 CARAT**  
Color Grade **D**  
Clarity Grade **VS 1**

November 24, 2025  
IGI Report Number **LG747513184**  
Description **LABORATORY GROWN DIAMOND**  
Shape and Cutting Style **SQUARE CUSHION BRILLIANT**  
Measurements **7.04 X 6.73 X 4.43 MM**

**GRADING RESULTS**

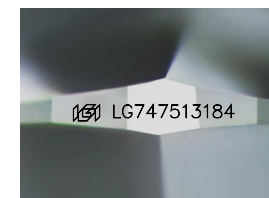
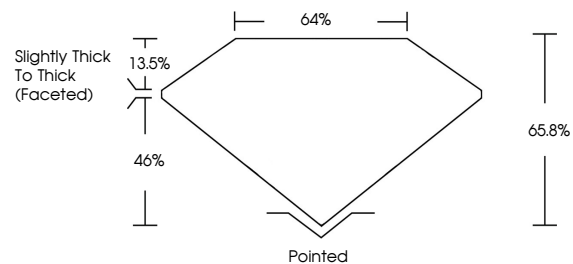
Carat Weight **1.51 CARAT**  
Color Grade **D**  
Clarity Grade **VS 1**

**ADDITIONAL GRADING INFORMATION**

Polish **EXCELLENT**  
Symmetry **VERY GOOD**  
Fluorescence **NONE**  
Inscription(s) **IGI LG747513184**

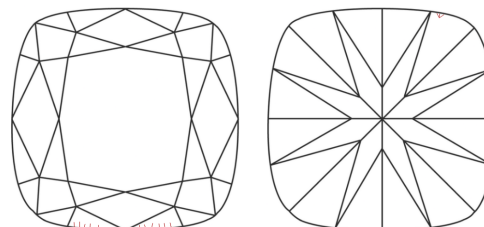
Comments: As Grown - No indication of post-growth treatment.  
This Laboratory Grown Diamond was created by High Pressure High Temperature (HPHT) growth process.  
Type II

**PROPORTIONS**



Sample Image Used

**CLARITY CHARACTERISTICS**



**KEY TO SYMBOLS**

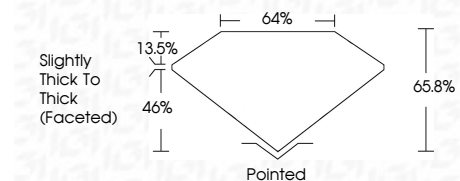
Red symbols indicate internal characteristics.  
Green symbols indicate external characteristics.

**COLOR**

D E F G H I J Faint Very Light Light

**CLARITY**

FL	IF	VS <sup>1-2</sup>	VS <sup>1-2</sup>	SI <sup>1-2</sup>	I <sup>1-3</sup>
Flawless	Internally Flawless	Very Very Slightly Included	Very Slightly Included	Slightly Included	Included



**ADDITIONAL GRADING INFORMATION**

Polish **EXCELLENT**  
Symmetry **VERY GOOD**  
Fluorescence **NONE**  
Inscription(s) **IGI LG747513184**  
Comments: As Grown - No indication of post-growth treatment.  
This Laboratory Grown Diamond was created by High Pressure High Temperature (HPHT) growth process.  
Type II



**IGI**



November 24, 2025  
IGI Report No **LG747513184**  
**SQUARE CUSHION BRILLIANT**  
7.04 X 6.73 X 4.43 MM  
1.51 CARAT  
D  
VS 1  
65.8%  
46%  
13.5%  
Slightly Thick To Thick (Faceted)  
Pointed  
EXCELLENT  
VERY GOOD  
NONE  
IGI LG747513184  
Comments: As Grown - No indication of post-growth treatment.  
This Laboratory Grown Diamond was created by High Pressure High Temperature (HPHT) growth process.  
Type II