



November 25, 2025

IGI Report Number **LG747513003**

ROUND BRILLIANT

LABORATORY GROWN DIAMOND

5.47 - 5.51 X 3.37 MM

Carat Weight	0.62 CARAT
Color Grade	D
Clarity Grade	VS 1
Cut Grade	IDEAL
Polish	VERY GOOD
Symmetry	EXCELLENT
Fluorescence	NONE
Inscription(s)	IGI LG747513003

Comments: As Grown - No indication of post-growth treatment. This Laboratory Grown Diamond was created by High Pressure High Temperature (HPHT) growth process. Type II

LABORATORY GROWN DIAMOND REPORT

November 25, 2025

IGI Report Number **LG747513003**

Description **LABORATORY GROWN DIAMOND**

Shape and Cutting Style **ROUND BRILLIANT**

Measurements **5.47 - 5.51 X 3.37 MM**

GRADING RESULTS

Carat Weight **0.62 CARAT**

Color Grade **D**

Clarity Grade **VS 1**

Cut Grade **IDEAL**

ADDITIONAL GRADING INFORMATION

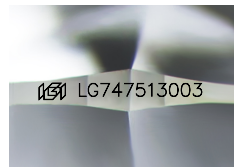
Polish **VERY GOOD**

Symmetry **EXCELLENT**

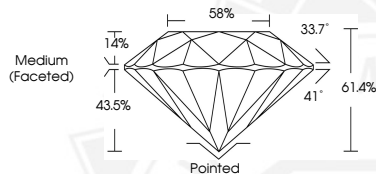
Fluorescence **NONE**

Inscription(s) **IGI LG747513003**

Comments: As Grown - No indication of post-growth treatment. This Laboratory Grown Diamond was created by High Pressure High Temperature (HPHT) growth process. Type II



Sample Image Used



November 25, 2025

IGI Report Number **LG747513003**

ROUND BRILLIANT

LABORATORY GROWN DIAMOND

5.47 - 5.51 X 3.37 MM

Carat Weight	0.62 CARAT
Color Grade	D
Clarity Grade	VS 1
Cut Grade	IDEAL
Polish	VERY GOOD
Symmetry	EXCELLENT
Fluorescence	NONE
Inscription(s)	IGI LG747513003

Comments: As Grown - No indication of post-growth treatment. This Laboratory Grown Diamond was created by High Pressure High Temperature (HPHT) growth process. Type II



THIS DOCUMENT WAS PRODUCED WITH THE FOLLOWING SECURITY MEASURES: SPECIAL DOCUMENT PAPER, INK SCREENS, WATERMARK, BACKGROUND DESIGNS, HOLOGRAM AND OTHER SECURITY FEATURES NOT LISTED AND DO EXCEED DOCUMENT SECURITY INDUSTRY GUIDELINES.