



# INTERNATIONAL GEMOLOGICAL INSTITUTE

ELECTRONIC COPY



November 25, 2025

IGI Report Number LG747512967

ROUND BRILLIANT

LABORATORY GROWN DIAMOND

5.27 - 5.31 X 3.33 MM

|                |                 |
|----------------|-----------------|
| Carat Weight   | 0.57 CARAT      |
| Color Grade    | D               |
| Clarity Grade  | VVS 2           |
| Cut Grade      | EXCELLENT       |
| Polish         | EXCELLENT       |
| Symmetry       | EXCELLENT       |
| Fluorescence   | NONE            |
| Inscription(s) | IGI LG747512967 |

Comments: As Grown - No indication of post-growth treatment. This Laboratory Grown Diamond was created by High Pressure High Temperature (HPHT) growth process. Type II

## LABORATORY GROWN DIAMOND REPORT

November 25, 2025

IGI Report Number

LG747512967

Description

LABORATORY GROWN DIAMOND

Shape and Cutting Style

ROUND BRILLIANT

Measurements

5.27 - 5.31 X 3.33 MM

### GRADING RESULTS

Carat Weight

0.57 CARAT

Color Grade

D

Clarity Grade

VVS 2

Cut Grade

EXCELLENT

### ADDITIONAL GRADING INFORMATION

Polish

EXCELLENT

Symmetry

EXCELLENT

Fluorescence

NONE

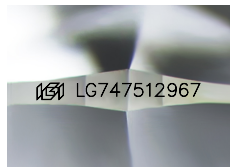
Inscription(s)

IGI LG747512967

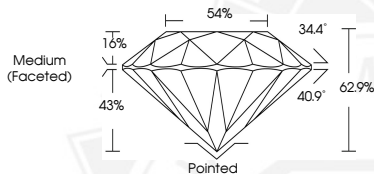
Comments: As Grown - No indication of post-growth treatment.

This Laboratory Grown Diamond was created by High Pressure High Temperature (HPHT) growth process.

Type II



Sample Image Used



November 25, 2025

IGI Report Number LG747512967

ROUND BRILLIANT

LABORATORY GROWN DIAMOND

5.27 - 5.31 X 3.33 MM

|                |                 |
|----------------|-----------------|
| Carat Weight   | 0.57 CARAT      |
| Color Grade    | D               |
| Clarity Grade  | VVS 2           |
| Cut Grade      | EXCELLENT       |
| Polish         | EXCELLENT       |
| Symmetry       | EXCELLENT       |
| Fluorescence   | NONE            |
| Inscription(s) | IGI LG747512967 |

Comments: As Grown - No indication of post-growth treatment. This Laboratory Grown Diamond was created by High Pressure High Temperature (HPHT) growth process. Type II



THIS DOCUMENT WAS PRODUCED WITH THE FOLLOWING SECURITY MEASURES: SPECIAL DOCUMENT PAPER, INK SCREENS, WATERMARK, BACKGROUND DESIGNS, HOLOGRAM AND OTHER SECURITY FEATURES NOT LISTED AND DO EXCEED DOCUMENT SECURITY INDUSTRY GUIDELINES.

For terms & conditions and to verify this report, please visit [www.igi.org](http://www.igi.org)